

CEMENT AND CONCRETE REFERENCE LABORATORY  
PROFICIENCY SAMPLE PROGRAM

Final Report  
C270 Masonry Mortar Proficiency Samples  
Number 35 and Number 36

November 2012



November 2, 2012

**TO: Participants in the CCRL Masonry Mortar (ASTM C270) Proficiency Sample Program**

**SUBJECT: Final Report on Masonry Mortar Proficiency Samples No. 35 and No. 36**

Enclosed is your copy of the final report on the test results for the pair of CCRL **Masonry Mortar** Proficiency Samples which were distributed in August 2012.

This report consists of a statistical Summary of Results, a set of general Scatter Diagrams, and associated detailed information. The Table of Results with test results and ratings for your laboratory can be downloaded at our website located at: <http://ccrl.us/>.

The CCRL Proficiency Sample Programs are intended for internal use by the laboratory as a tool to identify potential problems in laboratory procedures or test equipment and to initiate remedial actions. These programs are designed to complement the CCRL Laboratory Inspection Program as part of a total quality system. Care should be taken when using this program for any other purpose.

**Additional samples of these two masonry mortars and other CCRL samples are available for purchase.** These samples may be useful for equipment verification, technician training, and research. Contact CCRL for availability and price.

It is presently anticipated that the next Masonry Mortar Proficiency Samples will be distributed in August 2013.

Sincerely,

Robin K. Haupt  
Supervisor, Proficiency Sample Program  
Cement and Concrete Reference Laboratory

**To: Participants in the CCRL C270 Masonry Mortar Proficiency Sample Program**

**FROM: Robin K. Haupt, Supervisor, PSP**

**SUBJECT: Explanation of Final Report on Results of Tests on C270 Masonry Mortar Proficiency Samples No. 35 and No. 36**

This letter and the material included with it, constitute the final report and summary of results for the current pair of Masonry Mortar Proficiency Samples, which were distributed in August 2012. This material includes a Table of Results for individual laboratory data, a statistical Summary of Results, and a set of general Scatter Diagrams. Your unique laboratory number is displayed at the top of the individual Table of Results.

An explanation of the program is contained in the paper: "Statistical Evaluation of Interlaboratory Cement Tests" by J. R. Crandall and R. L. Blaine [View Document](#), and "Statistical Aspects of the Cement Testing Program" by W.J. Youden [View Document](#), which can be found in Volume 59, Proceedings of the 62<sup>nd</sup> Annual Meeting of the Society, June 25, 1959, American Society for Testing and Materials.

### **Laboratory Ratings**

Each laboratory receives an individualized Table of Results. The Table of Results shows the test title and the reporting unit in the first two columns. After that it lists the laboratory's results for the odd and even numbered samples, overall averages for the odd and even numbered samples, and the laboratory's ratings for the odd and even samples.

The ratings for the individual laboratory were determined in the manner described by Crandall and Blaine using a rating scale of 1 to 5 instead of 0 to 4. A rating of 0 is given for test results eliminated from calculations. The ratings have no valid standing beyond showing the difference between the individual laboratory result and the average for a particular test.

The following table details the relationship between the ratings and the averages.

<b>Ratings</b>	<b>Range (Number of Standard Deviations)</b>	<b>Number (Per 100) of Laboratories achieving the rating <sup>1</sup></b>
5	Less than 1	69
4	1 to 1.5	18
3	1.5 to 2	9
2	2 to 2.5	3
1	Greater than 2.5	1

Note: The sign of the rating merely shows whether the result reported was greater or less than the average obtained.

---

<sup>1</sup>Youden, W.J., "Statistical Aspects of the Cement Testing Program", Volume 59, *Proceedings of the 62<sup>nd</sup> Annual Meeting of the Society, June 25, 1959, American Society for Testing and Materials.*

Please note that individual laboratory ratings were not given for the flow of air content, compressive strength mortar, and initial water retention flow. Mortar flows in the range of  $110 \pm 5$  are satisfactory, laboratories with flow values outside this range will be flagged as a "Labs Eliminated" on the scatter diagram. Averages, standard deviations, and a scatter diagram are provided for your information. This information may be a helpful indicator of a problem with flow table apparatus or mortar mixing procedures.

In cases where some laboratories' results are eliminated, averages, standard deviations, coefficients of variation, and the ratings of the other laboratories' results, are recalculated using the data remaining after the elimination. Since the laboratory ratings given are the results from this one series of tests, you need not attach too much significance to a single low rating, or pair of ratings, from this one series. A continuing tendency to get low ratings on several pairs of samples should lead a laboratory to consider the types of error, systematic and random, contribute to ratings that are low. Systematic error, which is indicated by low ratings with the same signs on each pair of samples, means a consistent error is occurring in equipment and/or test procedures. One indication of random error is low ratings on both samples with different signs. Since systematic error occurs with more regularity, its cause is generally easier to find than the cause of random error.

### **Summary of Results**

Usually, averages, standard deviations, and coefficients of variation are given with all results reported, and then with one or more outlying results omitted. Sometimes, two or more recalculations with laboratories omitted, have been performed for the same test. In these cases, all of the laboratories omitted in previous recalculations are also omitted in subsequent ones. Results omitted are values that are more than three standard deviations from the mean of one or both samples. Often, elimination of these outlying results has little effect on the average, but may have a more pronounced effect on the standard deviation and coefficient of variation.

### **Scatter Diagrams**

General scatter diagrams are supplied with this report. Crandall and Blaine describe the manner of preparing scatter diagrams, and their interpretation, in the paper published in the 1959 ASTM Proceedings.

Using the results received from each laboratory, a scatter diagram is generated for each test method by plotting the value for the odd numbered samples on the X, or horizontal axis, against the value for the even numbered samples on the Y, or vertical axis. To find your point, just plot as you would when plotting any scatter diagram. Vertical and horizontal dashed lines, which divide the diagrams into four sections or quadrants, place the average values for the odd and even numbered samples, respectively. The first line of print under the diagram includes the test number, as given on the data sheet, the test title, and the number of data points on the diagrams. The number of plotted points may not agree with the total number of data pairs included in the analysis because a few points may be off the diagram, and some points may represent several data pairs, which are identical. Laboratories whose points are off the diagram will have a rating of  $\pm 1$  or worst for that particular test.

As described in Crandall and Blaine, a tight circular pattern of points around the intersection of the median lines is the ideal situation. Stretching out of the pattern into the first (upper right) and third (lower left) quadrants, suggests some kind of bias, or tendency for laboratories to get high or low results on both samples. Examination of the scatter diagrams may indicate strong evidence of bias in many cases.

**CCRL PROFICIENCY SAMPLE PROGRAM**  
Masonry Mortar Proficiency Samples No. 35 and No. 36

Final Report  
November 6, 2012

SUMMARY OF RESULTS

Test (unit)	Sample No.35				Sample No. 36		
	#Labs	Average	S.D.	C.V.	Average	S.D.	C.V.
<b>Air Content (percent)</b>							
	37	11.9	2.8	24	15.5	2.3	15
	*34	11.5	1.8	16	15.7	2.0	13
	* Labs Eliminated - 273, 840, 1374						
<b>Air Content - Water (percent)</b>							
	38	79.4	10.6	13	74.8	10.4	14
	*37	80.4	8.6	11	75.7	9.0	12
	* Labs Eliminated - 1374						
<b>Air Content - Flow (percent)</b>							
	38	106	8.5	8.0	107	9.1	8.5
	*34	109	2.6	2.4	109	3.0	2.7
	* Labs Eliminated - 283, 1435, 2136, 3184						
<b>Compressive Strength - 7 day (psi)</b>							
	38	860	681	79	963	871	90
	*33	634	188	30	688	166	24
	* Labs Eliminated - 475, 565, 1422, 1980, 3184						
<b>Compressive Strength - 28 day (psi)</b>							
	32	969	603	62	1135	696	61
	*27	811	156	19	950	151	16
	* Labs Eliminated - 475, 565, 1097, 1715, 3184						
<b>Compressive Strength - Mix Water (percent)</b>							
	39	79.3	10.7	13.5	73.7	9.3	12.7
	*37	81.0	7.8	9.6	75.2	6.9	9.2
	* Labs Eliminated - 1374, 1715						
<b>Compressive Strength - Flow (percent)</b>							
	39	109	2.4	2.2	109	2.9	2.6
	No Labs Eliminated for This Test						

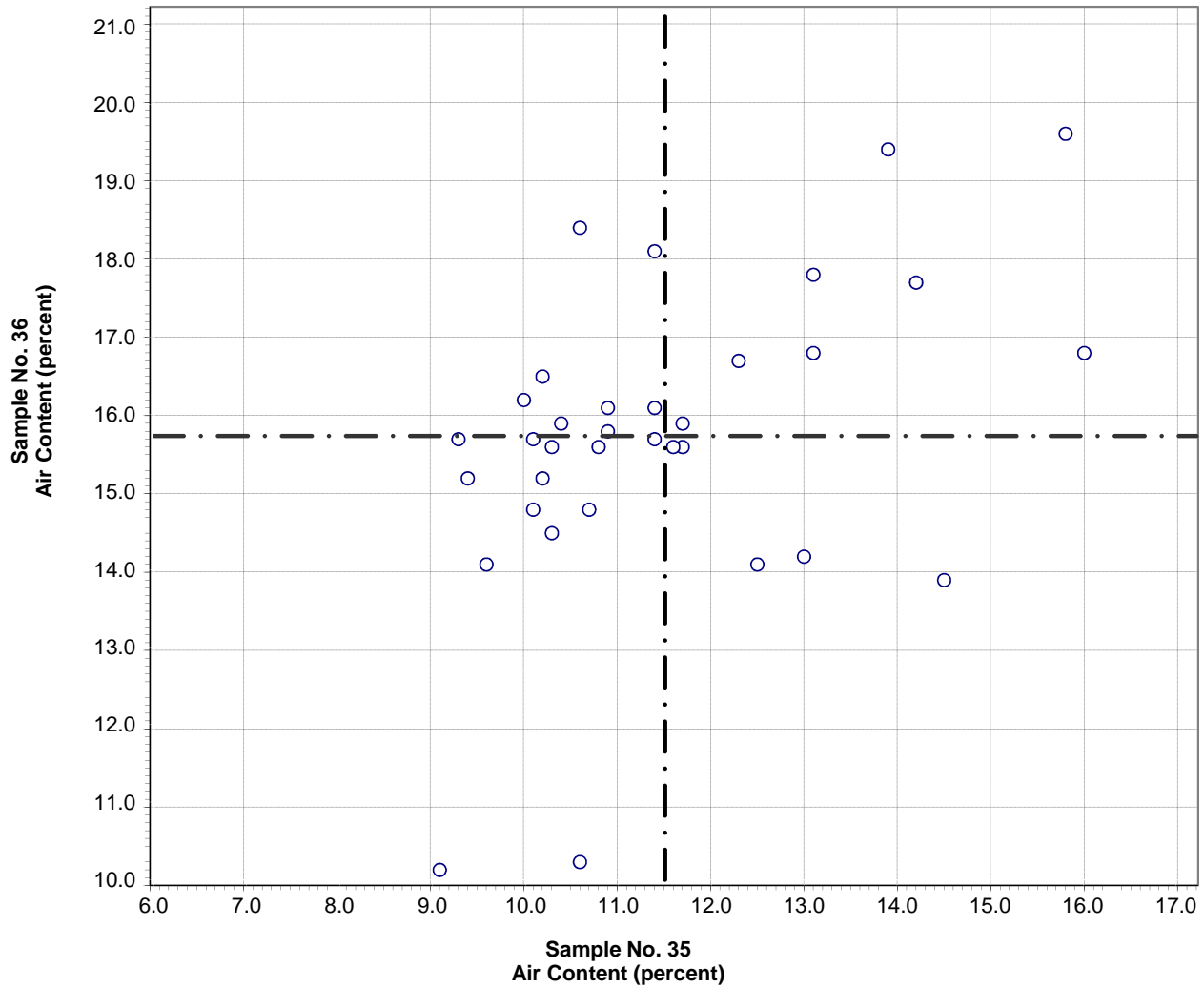
**CCRL PROFICIENCY SAMPLE PROGRAM**  
Masonry Mortar Proficiency Samples No. 35 and No. 36

Final Report  
November 6, 2012

SUMMARY OF RESULTS

Test (unit)	Sample No.35				Sample No. 36		
	#Labs	Average	S.D.	C.V.	Average	S.D.	C.V.
<b>Water Retention - Water (percent)</b>							
	33	82.1	8.1	9.9	75.8	7.5	9.9
	*27	82.9	2.9	3.5	76.0	2.6	3.5
* Labs Eliminated - 828, 945, 1417, 1715, 2136, 3184							
<b>Water Retention - Initial Flow (percent)</b>							
	33	110	3.1	2.8	110	3.1	2.8
No Labs Eliminated for This Test							
<b>Water Retention - Final Flow (percent)</b>							
	33	88	7.7	8.7	90	7.8	8.7
No Labs Eliminated for This Test							
<b>Water Retention Value (percent)</b>							
	33	80	7.3	9.0	82	7.2	8.8
No Labs Eliminated for This Test							

**CCRL Proficiency Sample Program  
Air Content  
MASONRY MORTAR Samples No. 35 and No. 36**



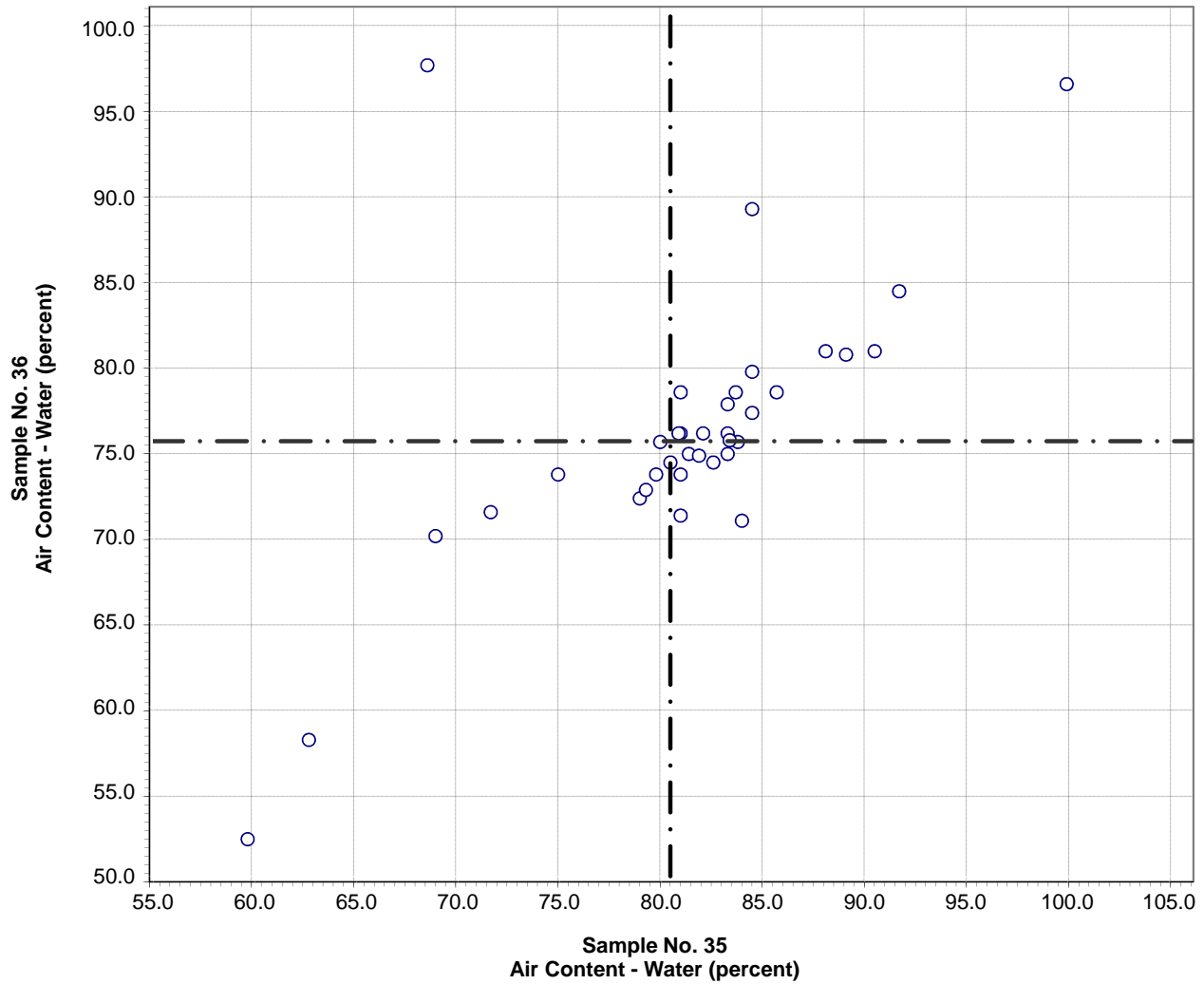
Test No. 170 Air Content 34 Points

Sample No. 35 Ave 11.5 S.D. 1.8 C.V. 16

Sample No. 36 Ave 15.7 S.D. 2.0 C.V. 13

Labs Eliminated: 273, 840, 1374

**CCRL Proficiency Sample Program  
Air Content - Water  
MASONRY MORTAR Samples No. 35 and No. 36**



**Test No. 180 Air Content - Water 36 Points**

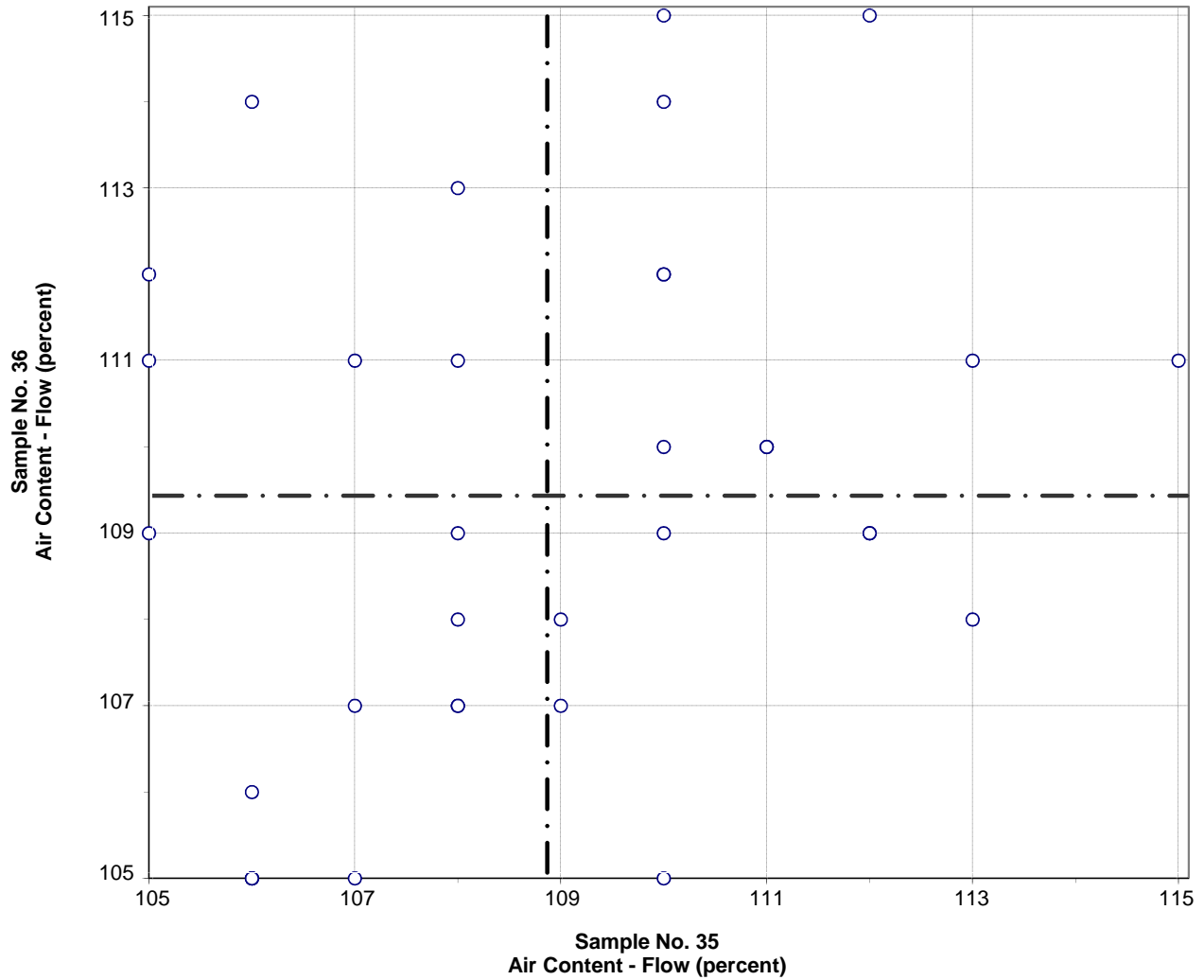
Sample No. 35 Ave 80.4 S.D. 8.6 C.V. 11  
 Sample No. 36 Ave 75.7 S.D. 9.0 C.V. 12

Labs Eliminated: 1374

Labs off Diagram: 1715



**CCRL Proficiency Sample Program  
Air Content - Flow  
MASONRY MORTAR Samples No. 35 and No. 36**

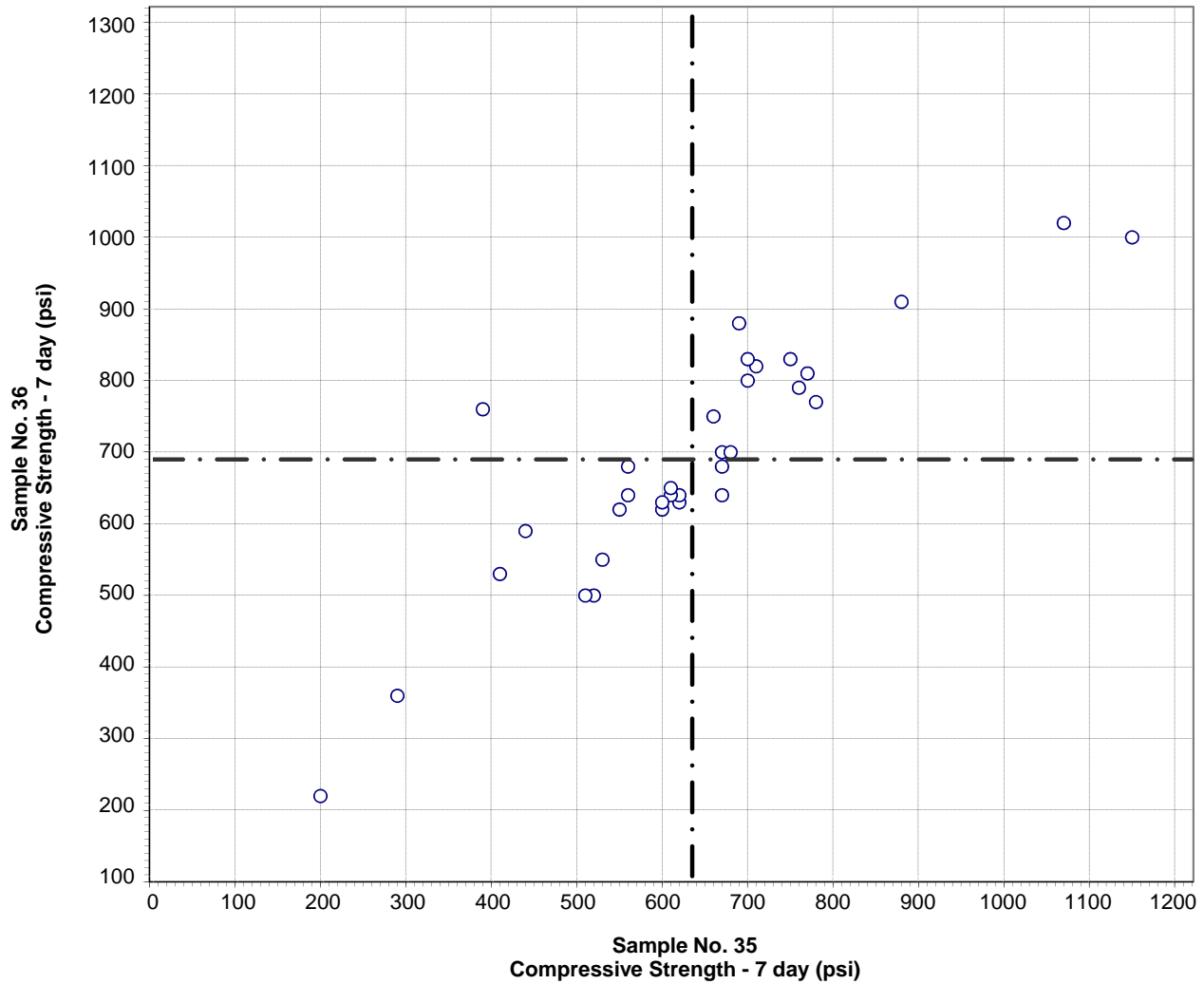


**Test No. 190 Air Content - Flow 34 Points**

Sample No. 35 Ave 109 S.D. 2.6 C.V. 2.4  
 Sample No. 36 Ave 109 S.D. 3.0 C.V. 2.7

Labs Eliminated: 283, 1435, 2136, 3184

**CCRL Proficiency Sample Program  
Compressive Strength - 7 day  
MASONRY MORTAR Samples No. 35 and No. 36**



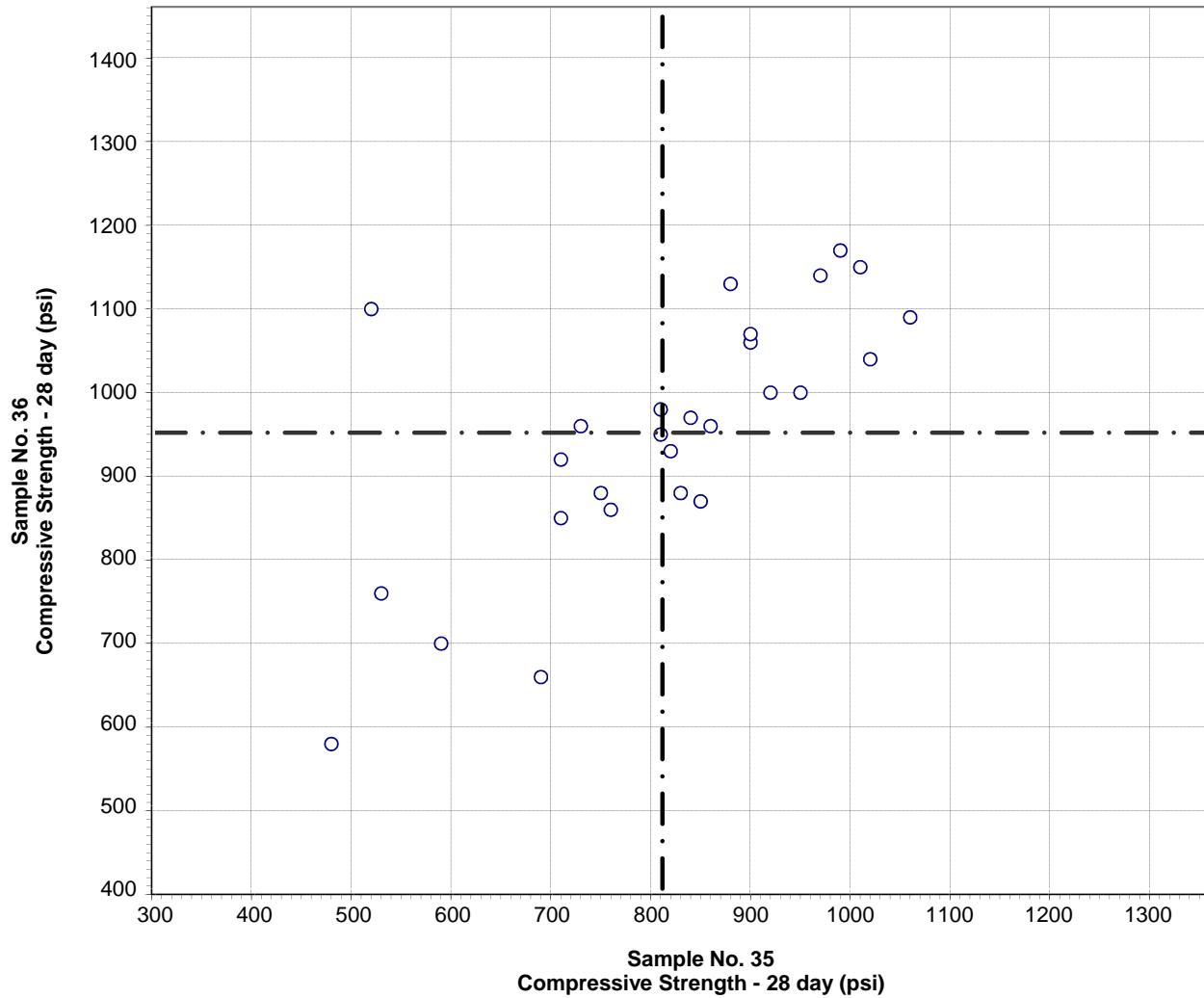
Test No. 210 Compressive Strength - 7 day 33 Points

Sample No. 35 Ave 634 S.D. 188 C.V. 30

Sample No. 36 Ave 688 S.D. 166 C.V. 24

Labs Eliminated: 475, 565, 1422, 1980, 3184

**CCRL Proficiency Sample Program  
Compressive Strength - 28 day  
MASONRY MORTAR Samples No. 35 and No. 36**



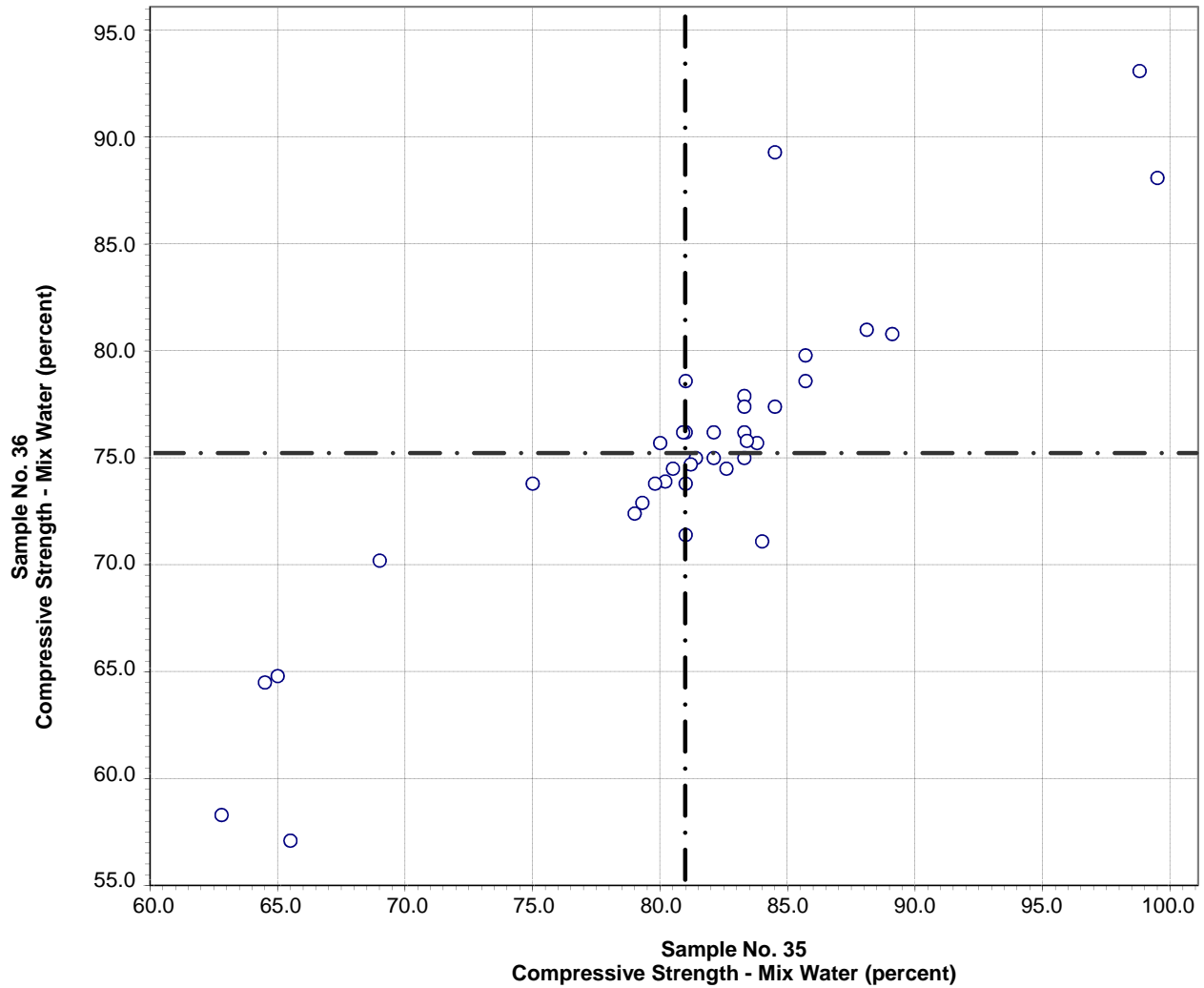
Test No. 211 Compressive Strength - 28 day 27 Points

Sample No. 35 Ave 811 S.D. 156 C.V. 19

Sample No. 36 Ave 950 S.D. 151 C.V. 16

Labs Eliminated: 475, 565, 1097, 1715, 3184

**CCRL Proficiency Sample Program  
Compressive Strength - Mix Water  
MASONRY MORTAR Samples No. 35 and No. 36**

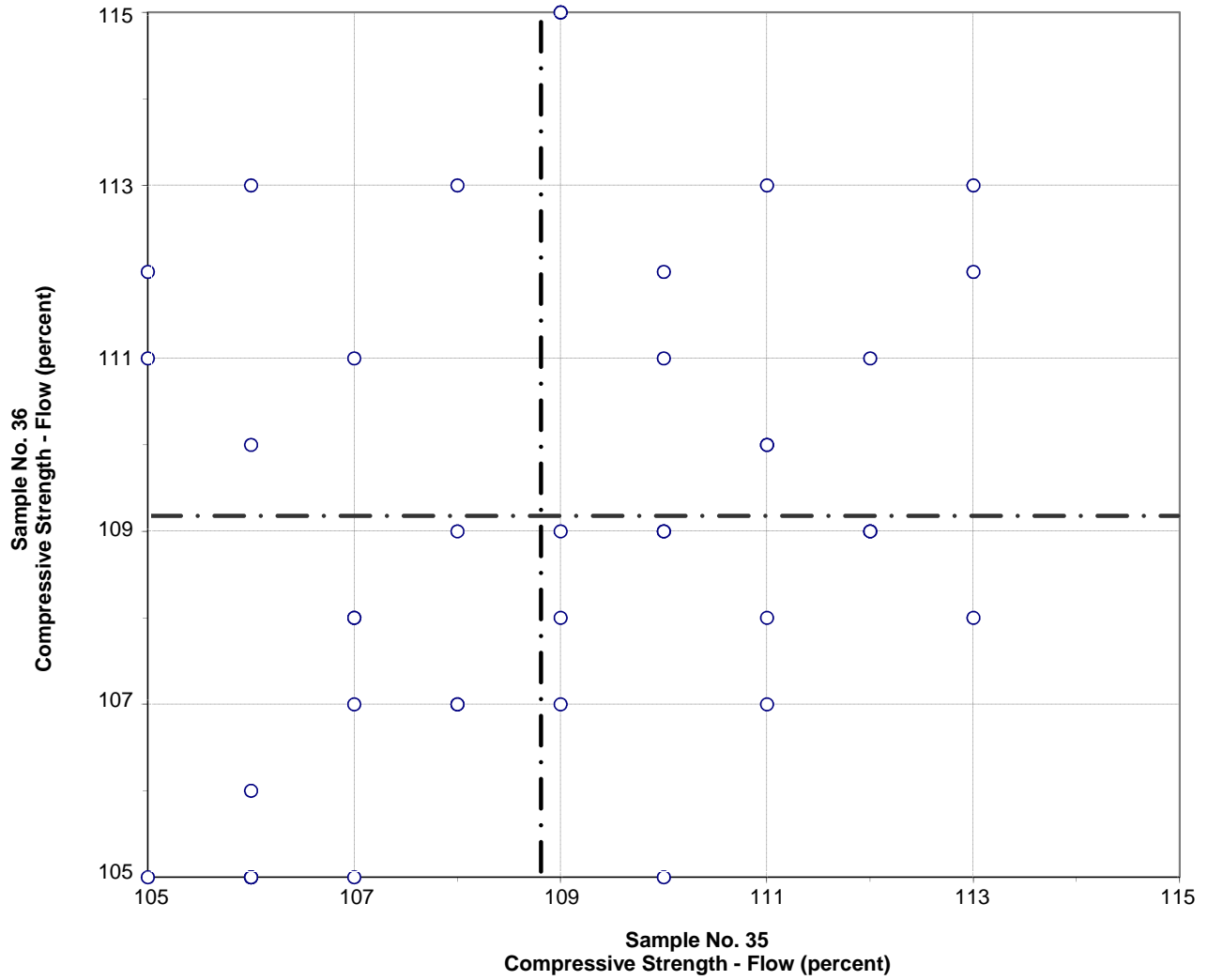


Test No. 220 Compressive Strength - Mix Water 37 Points

Sample No. 35 Ave 81.0 S.D. 7.8 C.V. 9.6  
 Sample No. 36 Ave 75.2 S.D. 6.9 C.V. 9.2

Labs Eliminated: 1374, 1715

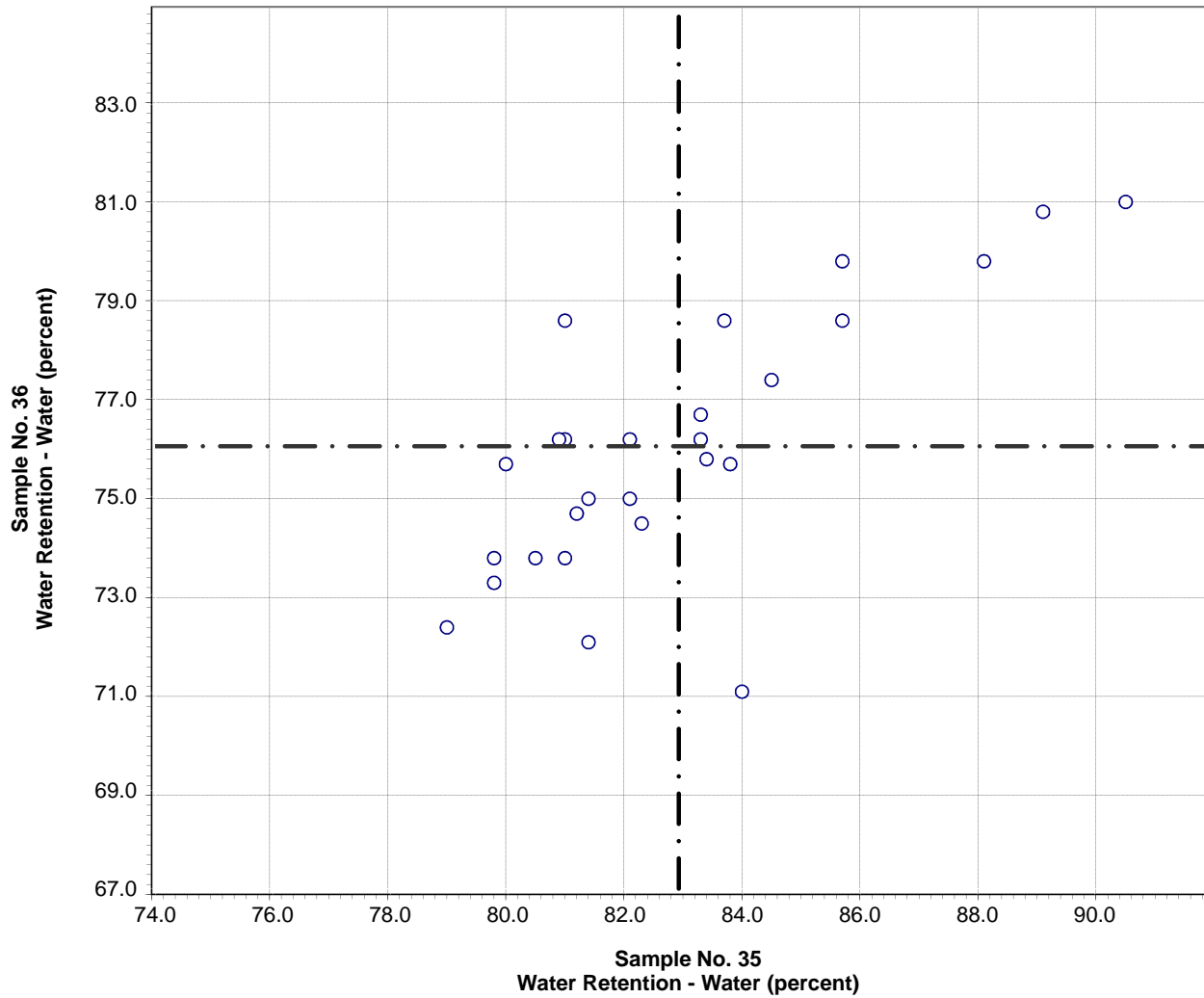
**CCRL Proficiency Sample Program  
Compressive Strength - Flow  
MASONRY MORTAR Samples No. 35 and No. 36**



Test No. 230 Compressive Strength - Flow 39 Points

Sample No. 35	Ave 109	S.D. 2.4	C.V. 2.2
Sample No. 36	Ave 109	S.D. 2.9	C.V. 2.6

**CCRL Proficiency Sample Program  
Water Retention - Water  
MASONRY MORTAR Samples No. 35 and No. 36**



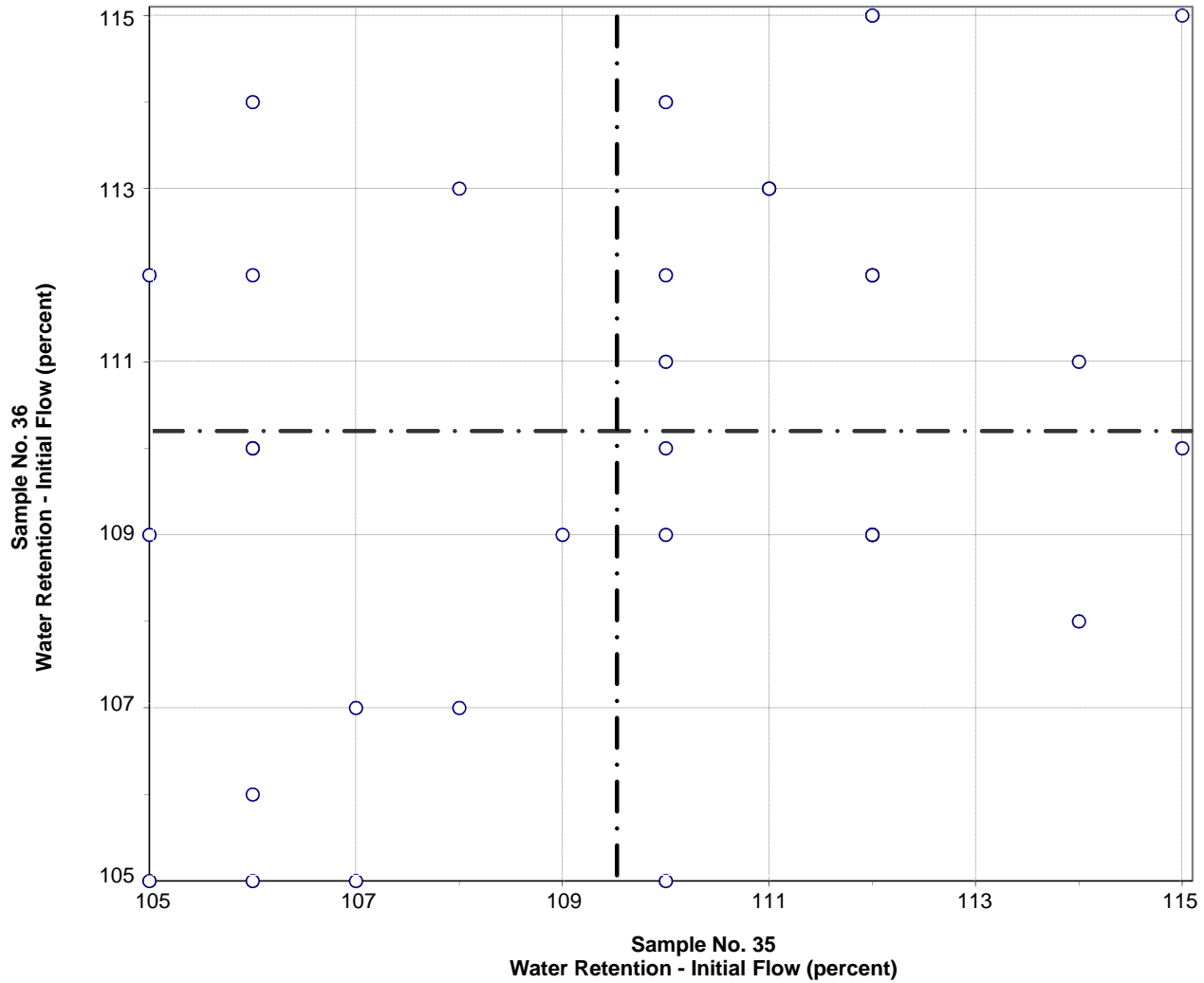
Test No. 330 Water Retention - Water 27 Points

Sample No. 35 Ave 82.9 S.D. 2.9 C.V. 3.5

Sample No. 36 Ave 76.0 S.D. 2.6 C.V. 3.5

Labs Eliminated: 828, 945, 1417, 1715, 2136, 3184

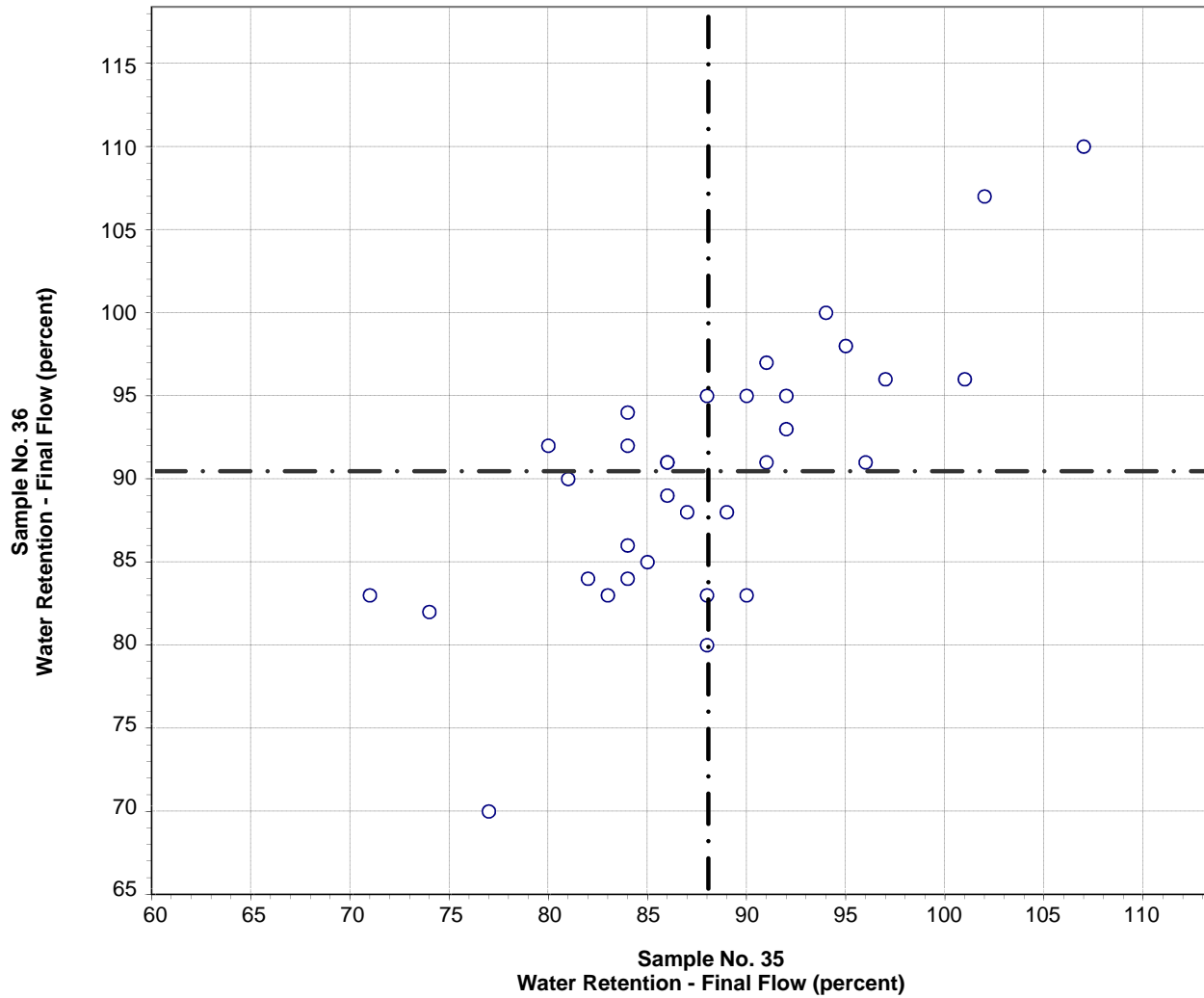
**CCRL Proficiency Sample Program  
Water Retention - Initial Flow  
MASONRY MORTAR Samples No. 35 and No. 36**



Test No. 331 Water Retention - Initial Flow 33 Points

Sample No. 35	Ave 110	S.D. 3.1	C.V. 2.8
Sample No. 36	Ave 110	S.D. 3.1	C.V. 2.8

**CCRL Proficiency Sample Program  
Water Retention - Final Flow  
MASONRY MORTAR Samples No. 35 and No. 36**

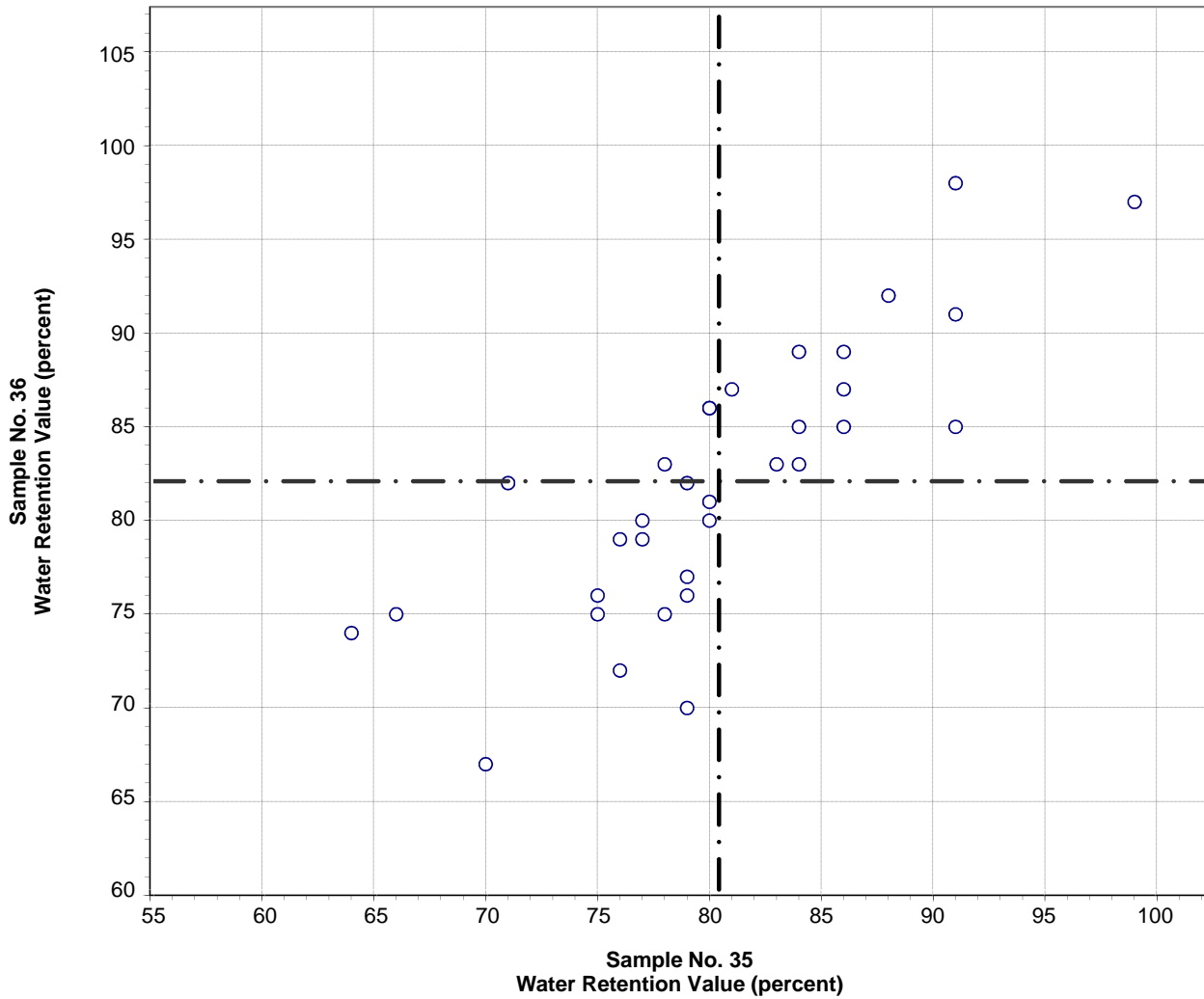


Test No. 332    Water Retention - Final Flow    33 Points

Sample No. 35	Ave 88	S.D. 7.7	C.V. 8.7
Sample No. 36	Ave 90	S.D. 7.8	C.V. 8.7



**CCRL Proficiency Sample Program  
Water Retention Value  
MASONRY MORTAR Samples No. 35 and No. 36**



Test No. 333 Water Retention Value 33 Points

Sample No. 35	Ave 80	S.D. 7.3	C.V. 9.0
Sample No. 36	Ave 82	S.D. 7.2	C.V. 8.8