

CEMENT AND CONCRETE REFERENCE LABORATORY
PROFICIENCY SAMPLE PROGRAM

Final Report
Pozzolan Proficiency Samples
Number 53 and Number 54

October 2013





October 9, 2013

To: Participants in the CCRL Pozzolan Proficiency Sample Program

SUBJECT: Pozzolan Proficiency Samples No. 53 and No. 54

Following is the final report for the pair of CCRL **Pozzolan** Proficiency Samples which were distributed in July 2013. Both samples were a Class F fly ash.

This report consists of two parts and each part must be downloaded from our website located at: [http://www.ccrl.us/](http://www.ccrl.us). One part contains general information that consists of a statistical Summary of Results, a set of Scatter Diagrams, and other associated information. The second part is laboratory specific information that consists of the Table of Results containing test results and ratings for your laboratory.

The CCRL Proficiency Sample Programs are intended for internal use by the laboratory as a tool to identify potential problems in laboratory procedures or test equipment and to initiate remedial actions. These programs are designed to complement the CCRL Laboratory Inspection Program as part of a total quality system. Care should be taken when using this program for any other purpose.

Additional samples of these two samples and other CCRL samples are available for purchase. These samples may be useful for equipment verification, technician training, and research. Contact CCRL for availability and price.

It is presently anticipated that the next Pozzolan Proficiency Samples will be distributed in July 2014.

Sincerely,

Robin K. Haupt
Supervisor, Proficiency Sample Programs
Cement and Concrete Reference Laboratory

To: Participants in the CCRL Pozzolan Proficiency Sample Program

FROM: Robin K. Haupt, Supervisor, PSP

SUBJECT: Explanation of Final Report on Results of Tests on Pozzolan Proficiency Samples No. 53 and No. 54

This memo and the material included with it constitute the final report and summary of results for the current pair of Pozzolan Proficiency Samples, which were distributed in July 2013. This material includes a Table of Results for individual laboratory data, a statistical Summary of Results, and a set of Scatter Diagrams. Your unique laboratory number is displayed at the top of the individual Table of Results.

An explanation of the program is contained in the paper: "Statistical Evaluation of Interlaboratory Cement Tests" by J. R. Crandall and R. L. Blaine [View Document](#), and "Statistical Aspects of the Cement Testing Program" by W.J. Youden [View Document](#), which can be found in Volume 59, Proceedings of the 62nd Annual Meeting of the Society, June 25, 1959, American Society for Testing and Materials.

Laboratory Ratings

Each laboratory receives an individualized Laboratory Ratings. Each line of the ratings shows the test title and the reporting unit in the first two columns. After that it lists in order, the laboratory's results for the odd and even numbered samples, overall averages for the odd and even numbered samples, and the laboratory's ratings for the odd and even samples.

The ratings for the individual laboratory were determined in the manner described by Crandall and Blaine using a rating scale of 1 to 5 instead of 0 to 4. The ratings have no valid standing beyond showing the difference between the individual laboratory result and the average for a particular test. Laboratory Ratings are calculated using the unrounded values for average and standard deviation.

The following table details the relationship between the ratings and the averages.

Ratings	Range (Number of Standard Deviations)	Number (Per 100) of Laboratories achieving the rating ¹
5	Less than 1	69
4	1 to 1.5	18
3	1.5 to 2	9
2	2 to 2.5	3
1	Greater than 2.5	1

The sign of the rating merely shows whether the result reported was greater or less than the average obtained. In cases where some laboratories' results are eliminated, averages, standard deviations, coefficients of variation, and the ratings of the other laboratories' results, are recalculated using the data remaining after the elimination. Since the laboratory ratings given are the results from this one series of tests, you need not attach too much significance to a single low rating, or pair of ratings, from this one series. A continuing tendency to get low ratings on several pairs of samples should lead a laboratory to consider the types of error, systematic and random, contribute to ratings that are low. Systematic error, which is indicated by low ratings with the same signs on each pair of samples, means a consistent error is occurring in equipment and/or test procedures. One indication of random error is low ratings on both

¹Youden, W.J., "Statistical Aspects of the Cement Testing Program", *Proceedings of the American Society for testing and Materials Volume 59*, 1959.

samples with different signs.. Since systematic error occurs with more regularity, its cause is generally easier to find than the cause of random error.

Summary of Results

The Summary of Results provide the statistical summary for each test. Each line lists the test, the number of participants represented, the averages, standard deviations and coefficients of variations. When necessary the data from the test is represented in two lines, one line with all results reported, and then a second line with outlying results omitted. Sometimes two or more recalculations are required to eliminate all outliers from the test. In these cases, all of the laboratories omitted in previous recalculations are also omitted in subsequent ones. Results omitted are values that are more than three standard deviations from the mean of one or both samples. Elimination of these outlying results may little effect on the average, but may have a more pronounced effect on the standard deviation and coefficient of variation.

Scatter Diagrams

General scatter diagrams are supplied with this report. Crandall and Blaine describe the manner of preparing scatter diagrams, and their interpretation, in the paper published in the 1959 ASTM Proceedings.

Using the results received from each laboratory, a scatter diagram is generated for each test method by plotting the value for the odd numbered samples on the X, or horizontal axis, against the value for the even numbered samples on the Y, or vertical axis. Vertical and horizontal dashed lines, which divide the diagrams into four sections or quadrants, place the average values for the odd and even numbered samples, respectively. The first line of print under the diagram includes the test number, as given on the data sheet, the test title, and the number of data points on the diagrams. The number of plotted points may not agree with the total number of data pairs included in the analysis because a few points may be off the diagram, and some points may represent several data pairs, which are identical. Laboratories whose points are off the diagram will have a rating of ± 1 for that particular test.

As described in Crandall and Blaine, a tight circular pattern of points around the intersection of the median lines is the ideal situation. Stretching out of the pattern into the first (upper right) and third (lower left) quadrants, suggests some kind of bias, or tendency for laboratories to get high or low results on both samples. Examination of the scatter diagrams indicates strong evidence of bias on many tests.

CCRL PROFICIENCY SAMPLE PROGRAM

Pozzolan Proficiency Samples No. 53 and No. 54

Final Report – Chemical
October 9, 2013

SUMMARY OF RESULTS

Test (unit)	Sample No.53				Sample No. 54		
	#Labs	Average	S.D.	C.V.	Average	S.D.	C.V.
Moisture Content (percent)							
	67	0.04	0.03	63	0.08	0.04	54
	No Labs Eliminated for This Test						
Silicon Dioxide (percent)							
	60	53.33	1.30	2.4	51.84	1.44	2.8
	*55	53.33	0.88	1.7	51.91	0.66	1.3
	* Labs Eliminated - 20, 23, 24, 35, 38						
Aluminum Oxide (minor oxides included) (percent)							
	16	17.15	0.81	4.7	21.70	0.68	3.1
	No Labs Eliminated for This Test						
Aluminum Oxide (minor oxides excluded) (percent)							
	58	16.25	0.87	5.4	19.83	0.98	5.0
	*56	16.12	0.51	3.1	19.96	0.67	3.3
	* Labs Eliminated - 35, 2116						
Ferric Oxide (percent)							
	60	6.15	0.25	4.1	6.48	0.25	3.9
	*58	6.15	0.24	3.9	6.48	0.20	3.1
	* Labs Eliminated - 2116, 2621						
Calcium Oxide (minor oxides included) (percent)							
	19	13.59	0.97	7.1	13.22	2.07	15.6
	*17	13.69	0.66	4.8	12.91	0.50	3.9
	* Labs Eliminated - 1, 2621						
Calcium Oxide (minor oxides excluded) (percent)							
	48	13.34	0.40	3.0	12.67	0.54	4.3
	*45	13.33	0.39	2.9	12.61	0.28	2.2
	* Labs Eliminated - 23, 35, 176						

CCRL PROFICIENCY SAMPLE PROGRAM

Pozzolan Proficiency Samples No. 53 and No. 54

Final Report – Chemical
October 9, 2013

SUMMARY OF RESULTS

Test (unit)	Sample No.53				Sample No. 54		
	#Labs	Average	S.D.	C.V.	Average	S.D.	C.V.
Magnesium Oxide (percent)							
	62	4.61	0.32	6.8	3.40	0.32	9.4
	*60	4.65	0.25	5.3	3.36	0.19	5.6
	* Labs Eliminated - 35, 2116						
Sulfur Trioxide (percent)							
	65	0.60	0.09	14.4	0.71	0.10	14.3
	*60	0.58	0.06	9.7	0.70	0.07	9.3
	* Labs Eliminated - 23, 35, 125, 176, 1479						
Loss on Ignition (percent)							
	74	0.12	0.07	63	0.29	0.09	32
	*70	0.10	0.04	41	0.29	0.09	30
	* Labs Eliminated - 43, 125, 1251, 2116						
Sodium Oxide (percent)							
	60	1.56	0.22	14.1	1.00	0.14	13.9
	*53	1.61	0.10	6.2	0.99	0.06	6.2
	* Labs Eliminated - 34, 35, 125, 176, 1799, 2116, 3135						
Potassium Oxide (percent)							
	60	2.08	0.34	16.5	1.17	0.20	17.1
	*52	2.17	0.08	3.6	1.14	0.04	3.3
	* Labs Eliminated - 23, 34, 35, 169, 1251, 1799, 2116, 2621						
Available Sodium Oxide (percent)							
	27	0.54	0.23	43	0.46	0.25	53
	*26	0.51	0.13	26	0.42	0.14	32
	* Labs Eliminated - 2621						
Available Potassium Oxide (percent)							
	27	0.66	0.29	43	0.46	0.22	48
	*25	0.60	0.12	21	0.43	0.15	34
	* Labs Eliminated - 52, 2621						

CCRL PROFICIENCY SAMPLE PROGRAM

Pozzolan Proficiency Samples No. 53 and No. 54

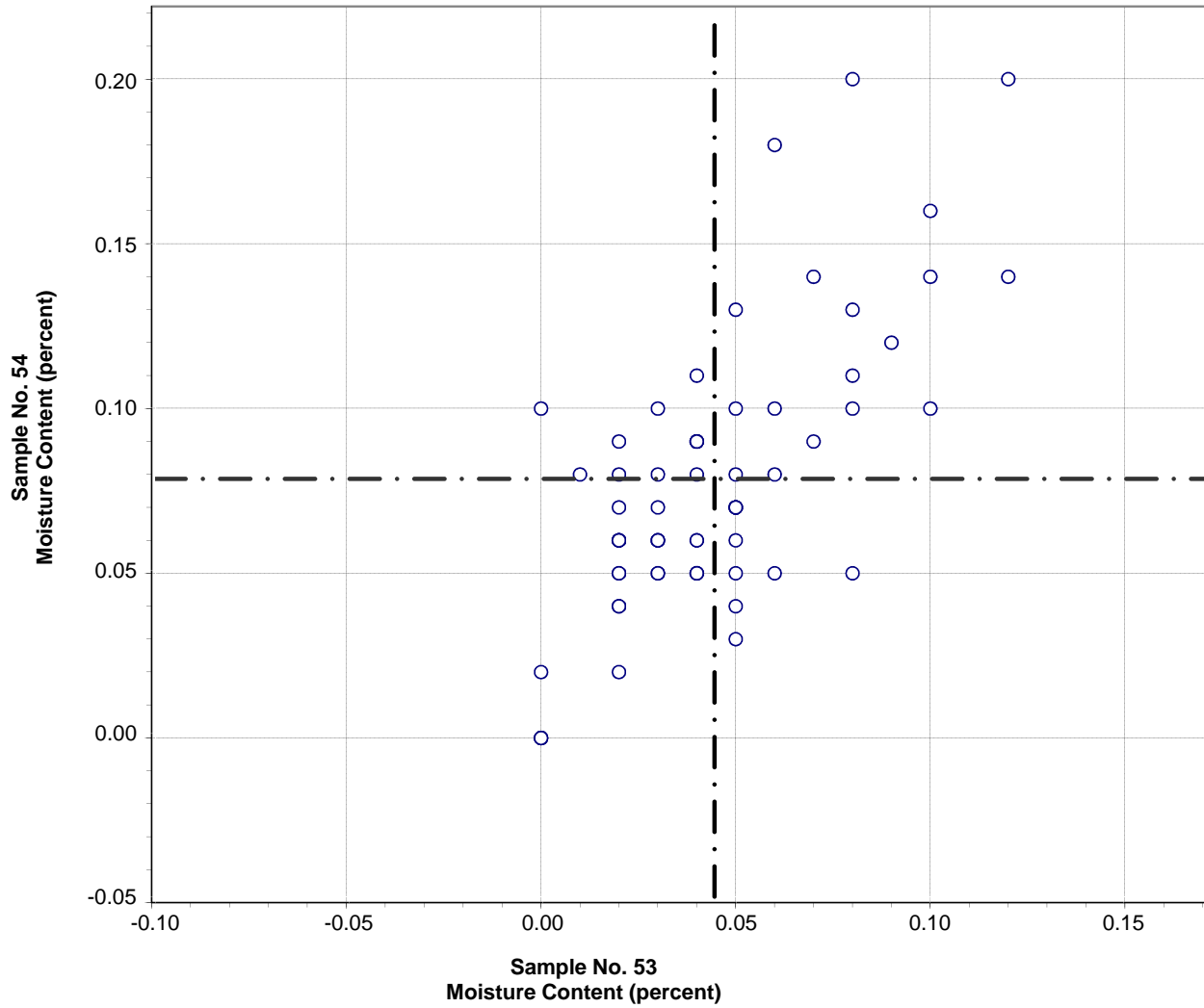
Final Report – Chemical
October 9, 2013

SUMMARY OF RESULTS

Test (unit)	Sample No.53				Sample No. 54		
	#Labs	Average	S.D.	C.V.	Average	S.D.	C.V.
Available Alkali (percent)							
	27	0.99	0.41	42	0.76	0.38	50
	*25	0.89	0.18	20	0.70	0.21	30

* Labs Eliminated - 52, 2621

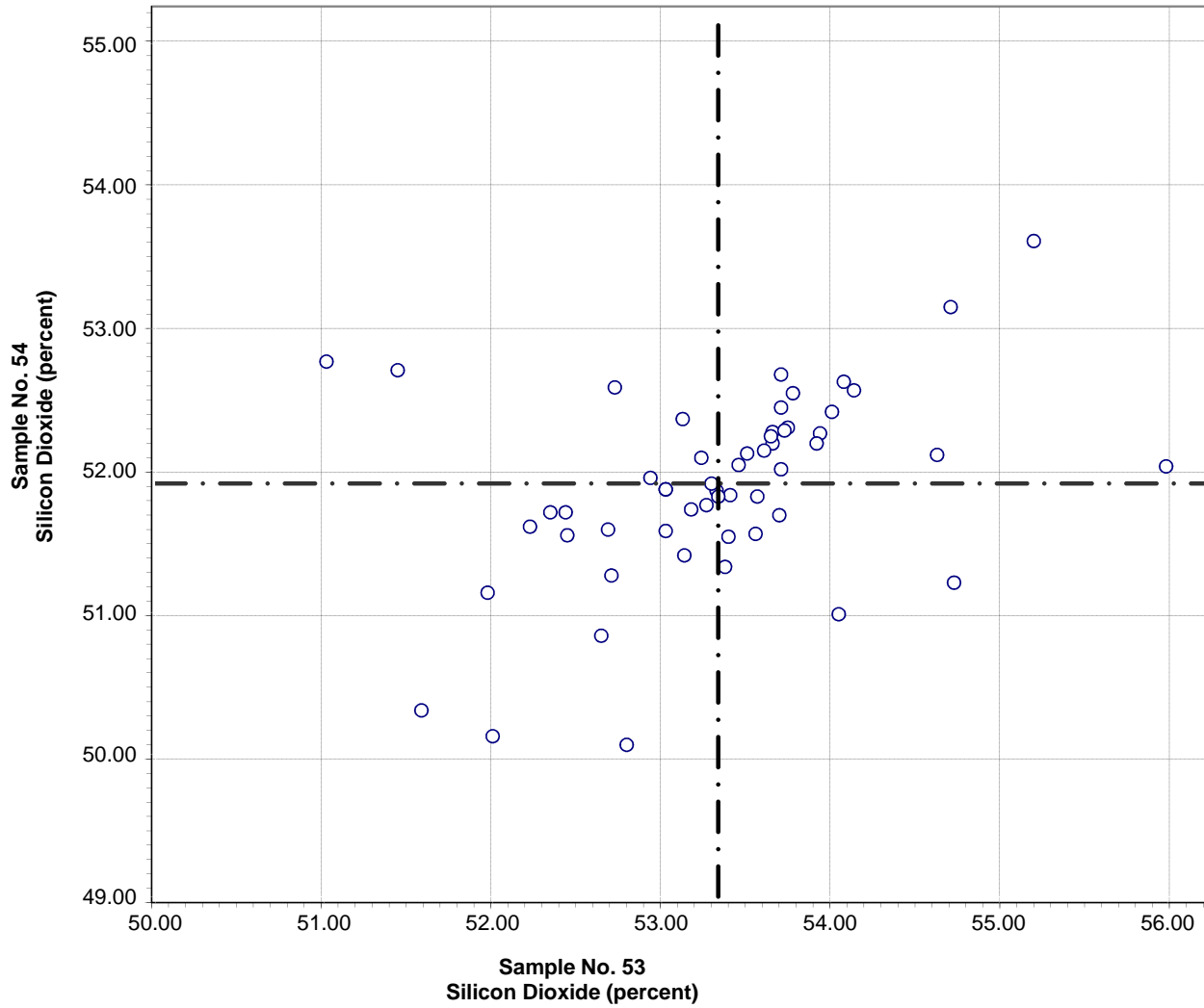
**CCRL Proficiency Sample Program
Moisture Content
POZZOLAN Samples No. 53 and No. 54**



Test No. 5 Moisture Content 67 Points

Sample No. 53	Ave 0.04	S.D. 0.03	C.V. 63
Sample No. 54	Ave 0.08	S.D. 0.04	C.V. 54

**CCRL Proficiency Sample Program
Silicon Dioxide
POZZOLAN Samples No. 53 and No. 54**

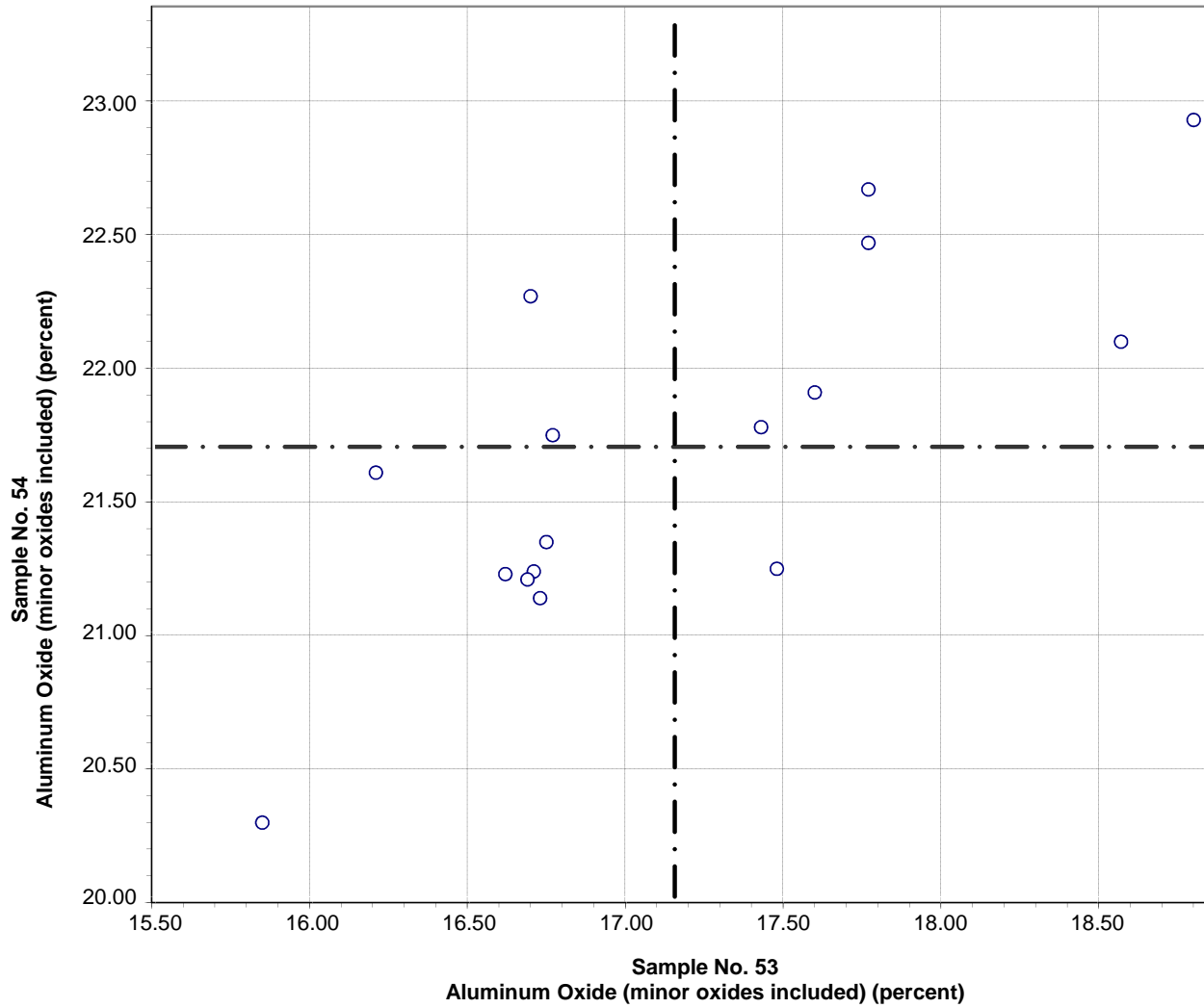


Test No. 10 Silicon Dioxide 55 Points

Sample No. 53	Ave 53.33	S.D. 0.88	C.V. 1.7
Sample No. 54	Ave 51.91	S.D. 0.66	C.V. 1.3

Labs Eliminated: 20, 23, 24, 35, 38

**CCRL Proficiency Sample Program
Aluminum Oxide (minor oxides included)
POZZOLAN Samples No. 53 and No. 54**

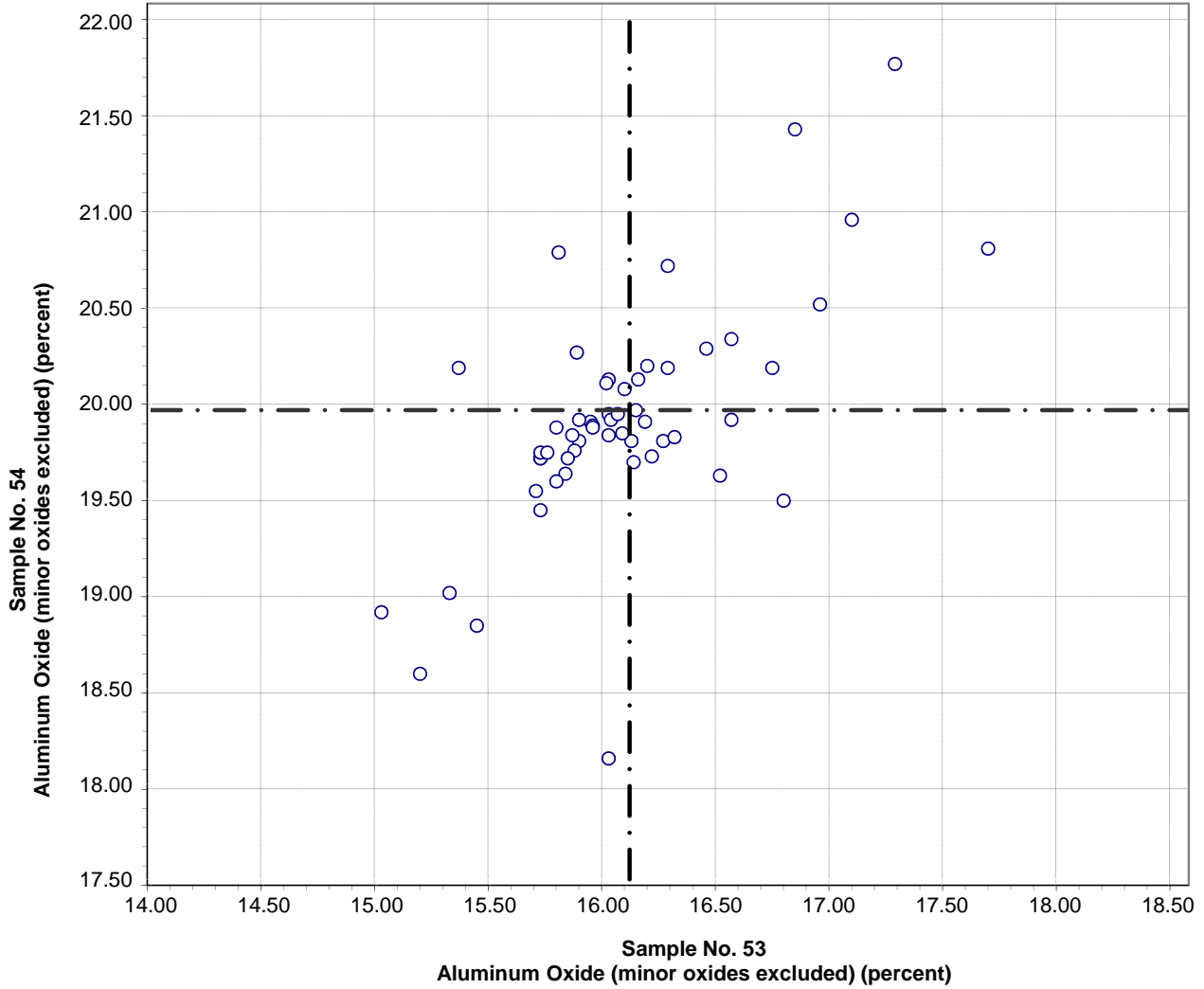


Test No. 20 Aluminum Oxide (minor oxides included) 16 Points

Sample No. 53 Ave 17.15 S.D. 0.81 C.V. 4.7

Sample No. 54 Ave 21.70 S.D. 0.68 C.V. 3.1

**CCRL Proficiency Sample Program
Aluminum Oxide (minor oxides excluded)
POZZOLAN Samples No. 53 and No. 54**



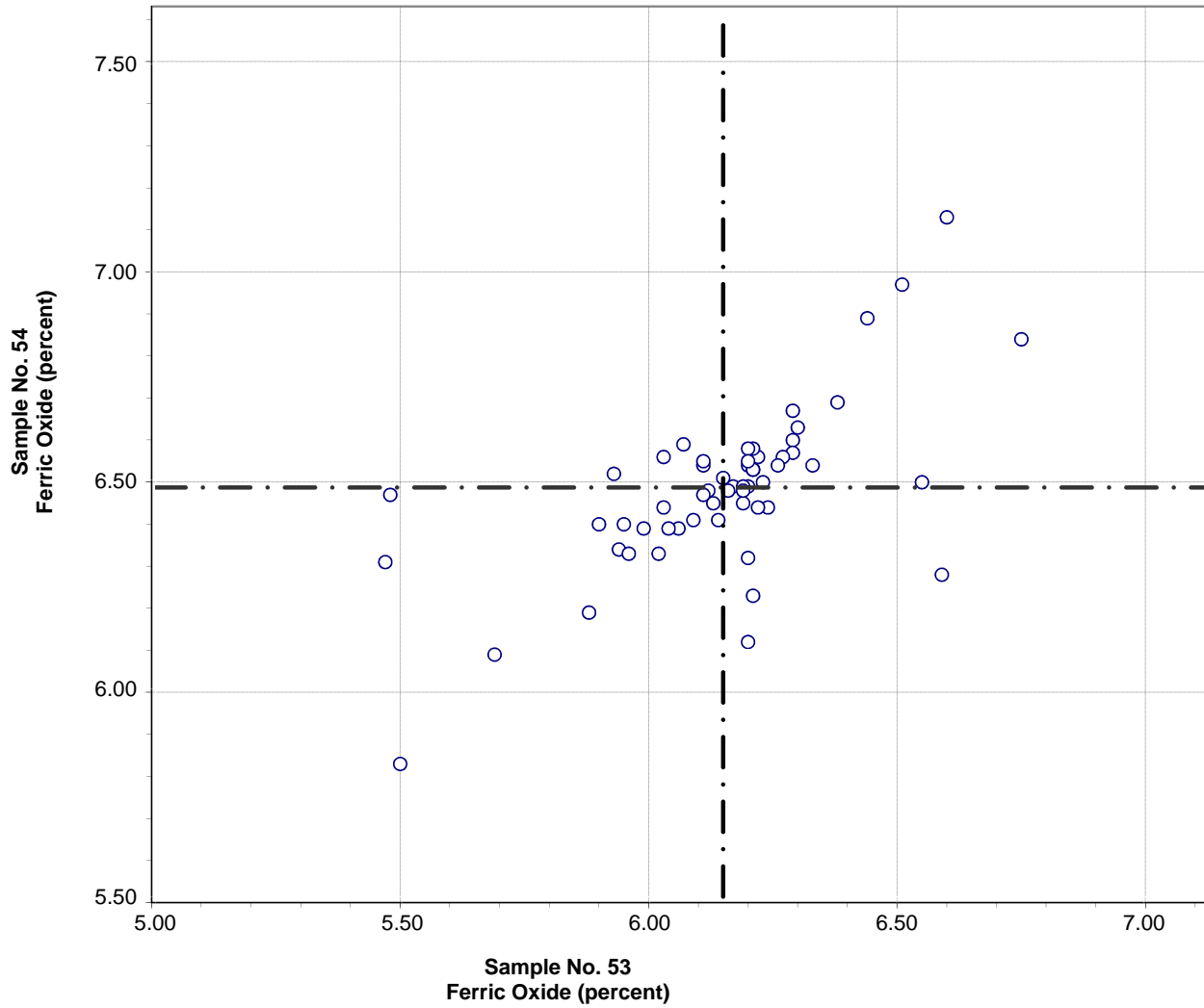
Test No. 21 Aluminum Oxide (minor oxides excluded) 55 Points

Sample No. 53 Ave 16.12 S.D. 0.51 C.V. 3.1
 Sample No. 54 Ave 19.96 S.D. 0.67 C.V. 3.3

Labs Eliminated: 35, 2116

Labs off Diagram: 1

**CCRL Proficiency Sample Program
Ferric Oxide
POZZOLAN Samples No. 53 and No. 54**

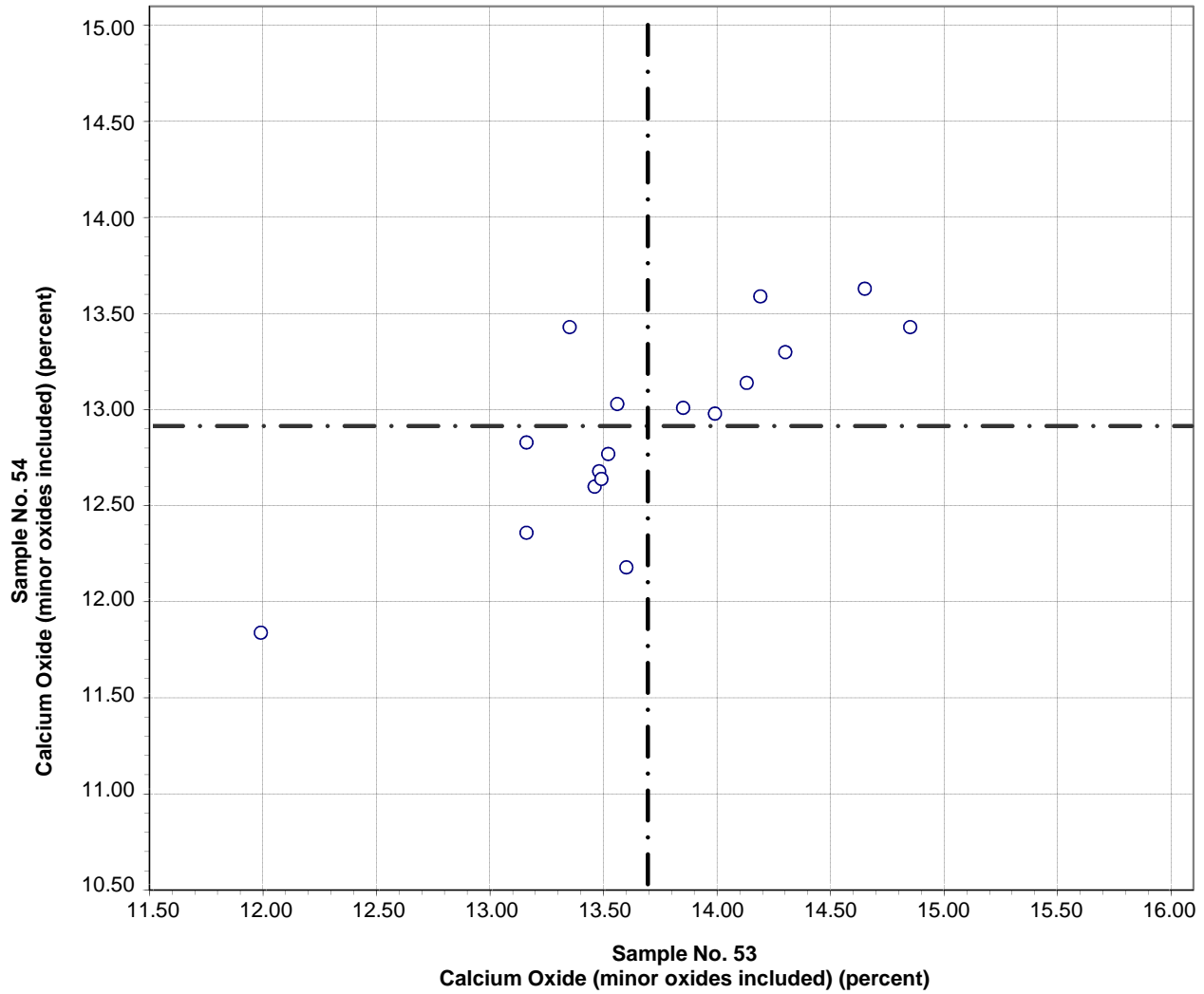


Test No. 30 Ferric Oxide 58 Points

Sample No. 53 Ave 6.15 S.D. 0.24 C.V. 3.9
Sample No. 54 Ave 6.48 S.D. 0.20 C.V. 3.1

Labs Eliminated: 2116, 2621

**CCRL Proficiency Sample Program
 Calcium Oxide (minor oxides included)
 POZZOLAN Samples No. 53 and No. 54**



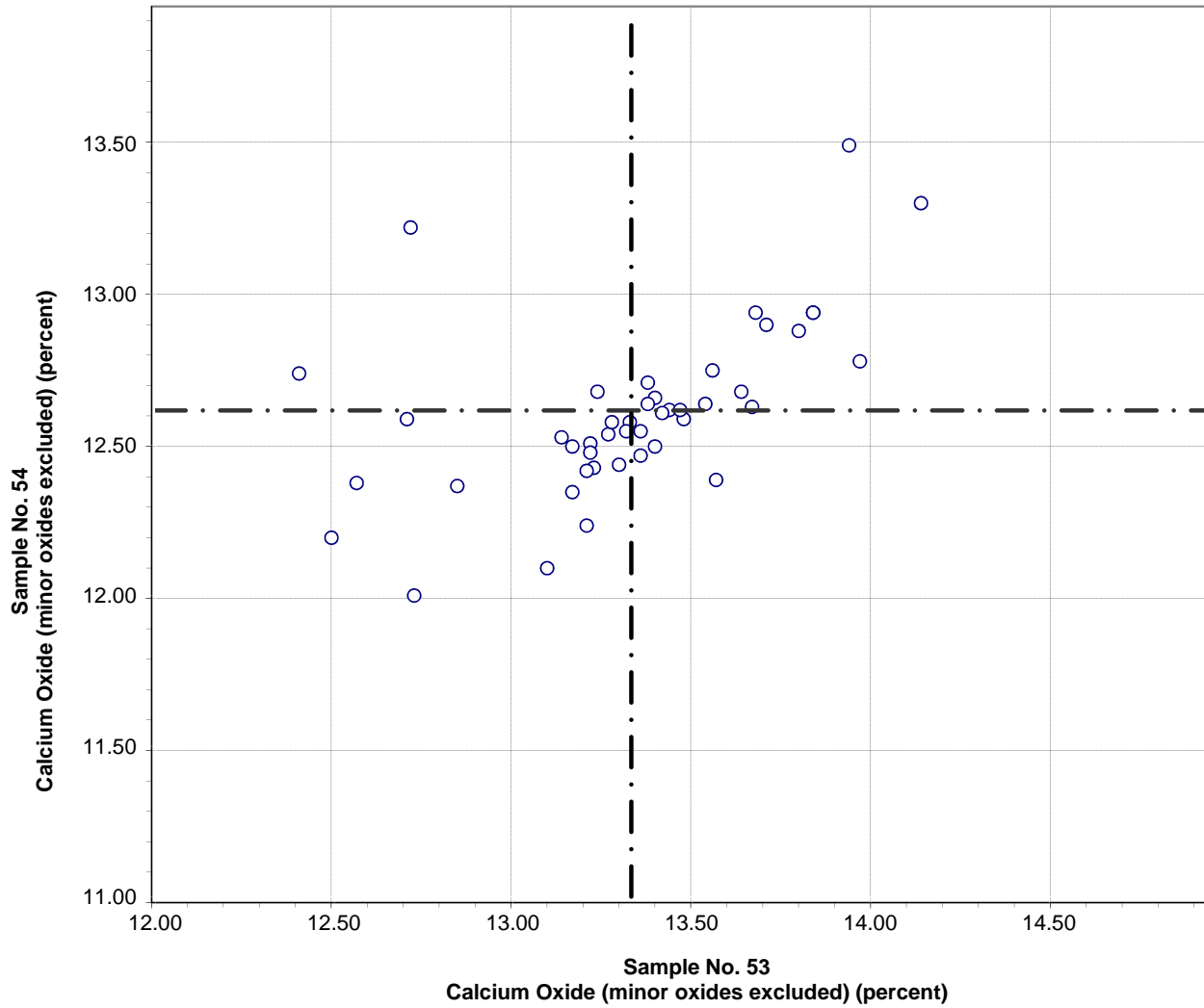
Test No. 40 Calcium Oxide (minor oxides included) 17 Points

Sample No. 53 Ave 13.69 S.D. 0.66 C.V. 4.8

Sample No. 54 Ave 12.91 S.D. 0.50 C.V. 3.9

Labs Eliminated: 1, 2621

**CCRL Proficiency Sample Program
 Calcium Oxide (minor oxides excluded)
 POZZOLAN Samples No. 53 and No. 54**



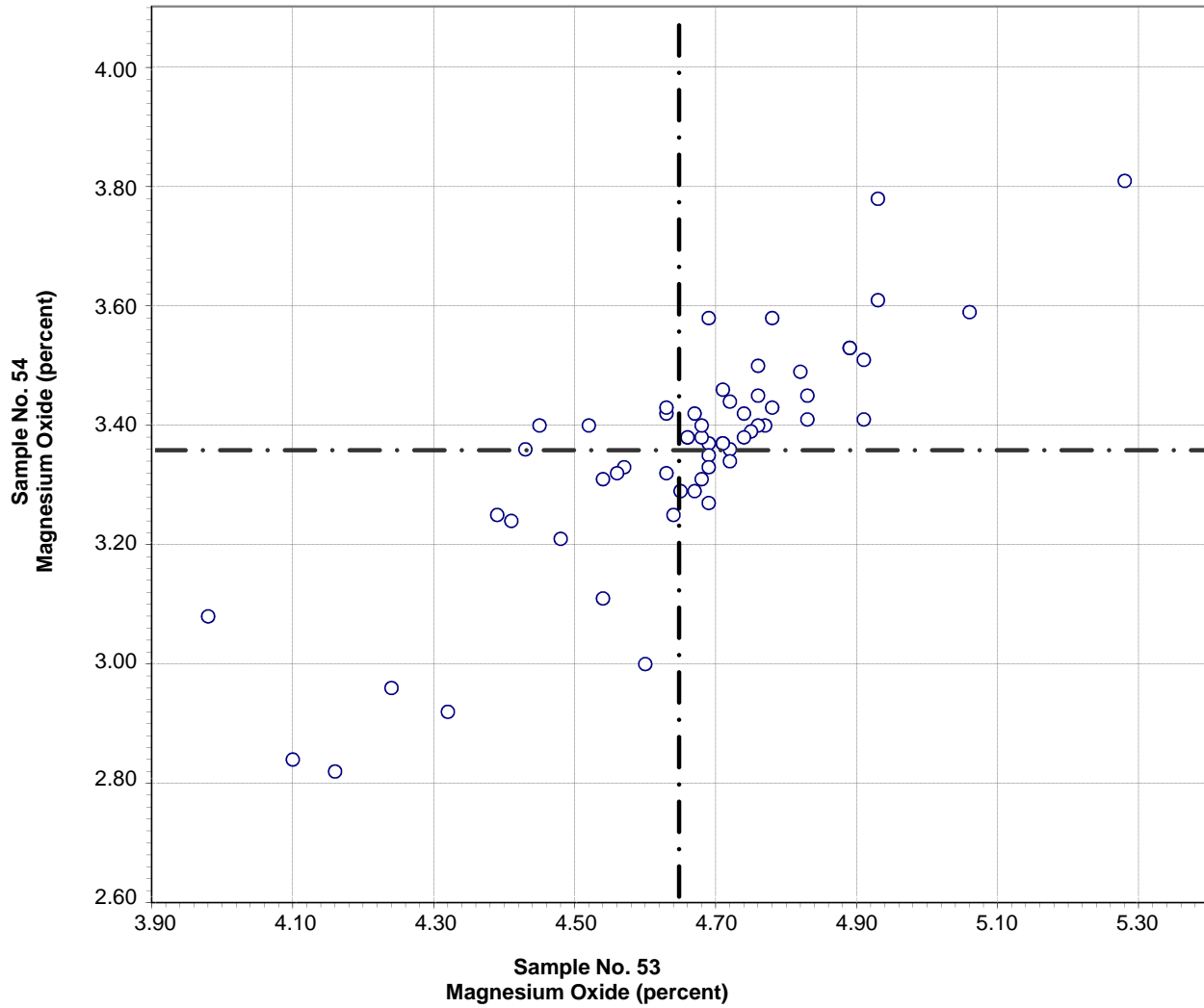
Test No. 42 Calcium Oxide (minor oxides excluded) 45 Points

Sample No. 53 Ave 13.33 S.D. 0.39 C.V. 2.9

Sample No. 54 Ave 12.61 S.D. 0.28 C.V. 2.2

Labs Eliminated: 23, 35, 176

CCRL Proficiency Sample Program
Magnesium Oxide
POZZOLAN Samples No. 53 and No. 54



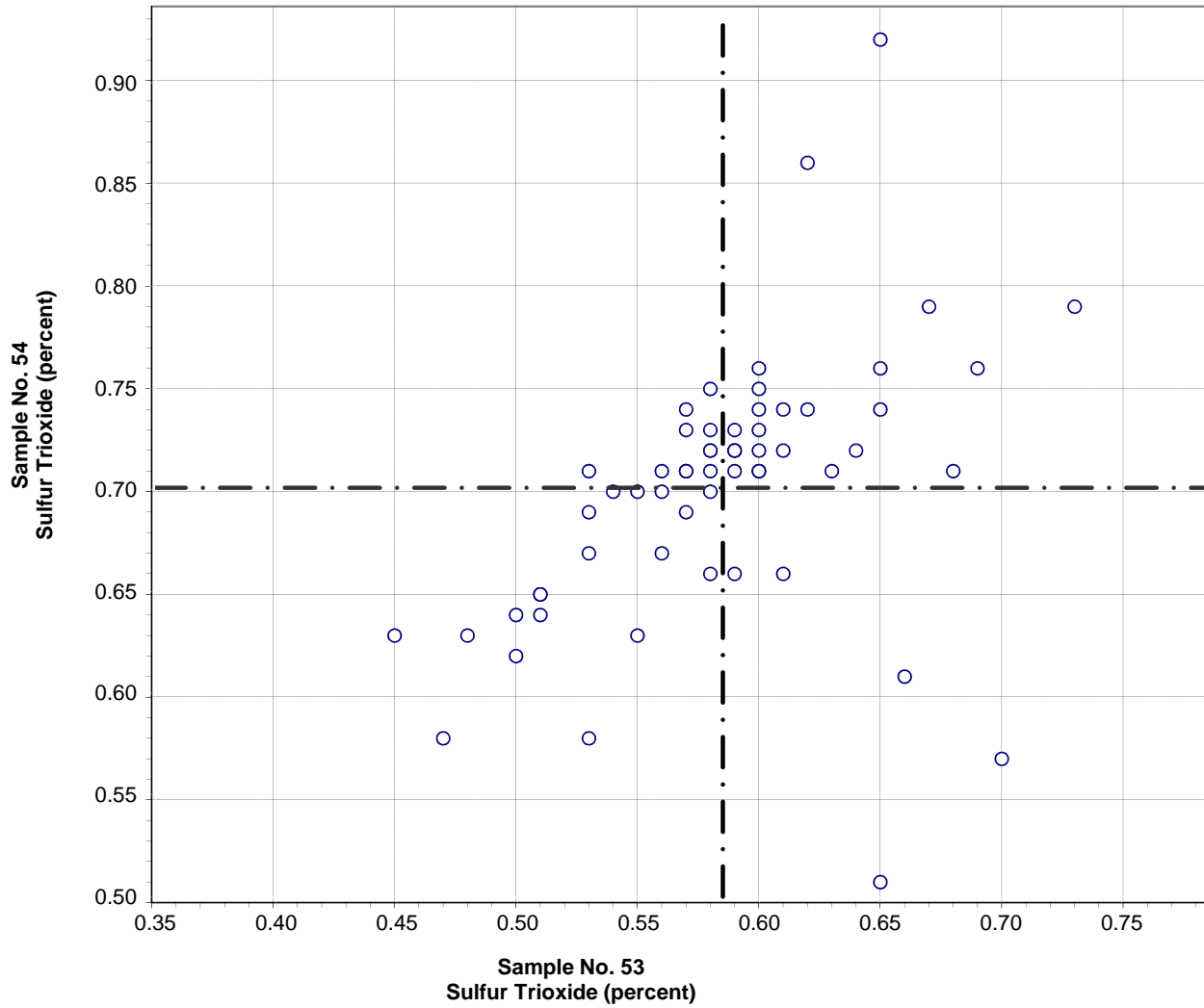
Test No. 50 Magnesium Oxide 59 Points

Sample No. 53 Ave 4.65 S.D. 0.25 C.V. 5.3
Sample No. 54 Ave 3.36 S.D. 0.19 C.V. 5.6

Labs Eliminated: 35, 2116

Labs off Diagram: 58

**CCRL Proficiency Sample Program
Sulfur Trioxide
POZZOLAN Samples No. 53 and No. 54**

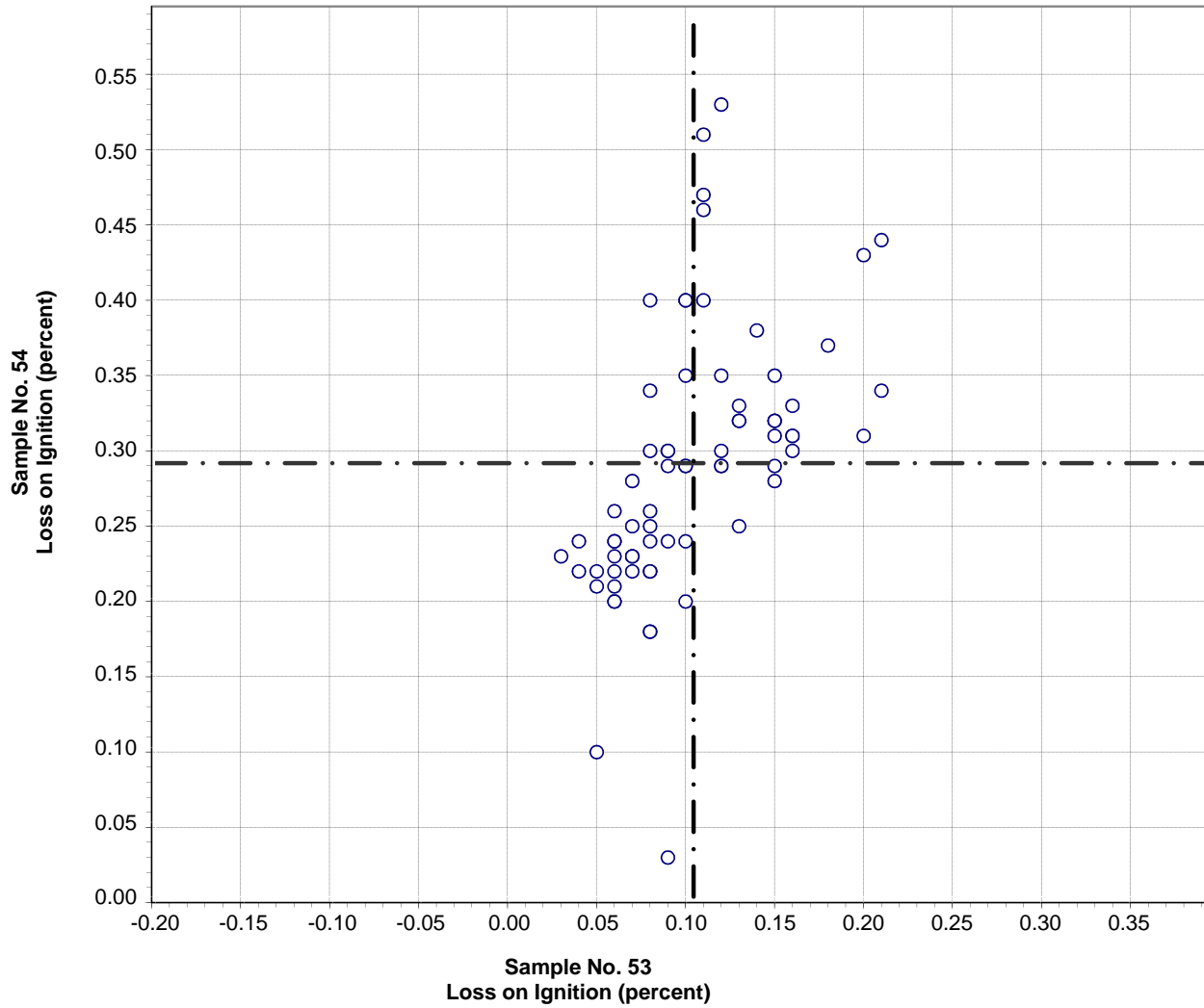


Test No. 60 Sulfur Trioxide 60 Points

Sample No. 53 Ave 0.58 S.D. 0.06 C.V. 9.7
 Sample No. 54 Ave 0.70 S.D. 0.07 C.V. 9.3

Labs Eliminated: 23, 35, 125, 176, 1479

CCRL Proficiency Sample Program
Loss on Ignition
POZZOLAN Samples No. 53 and No. 54

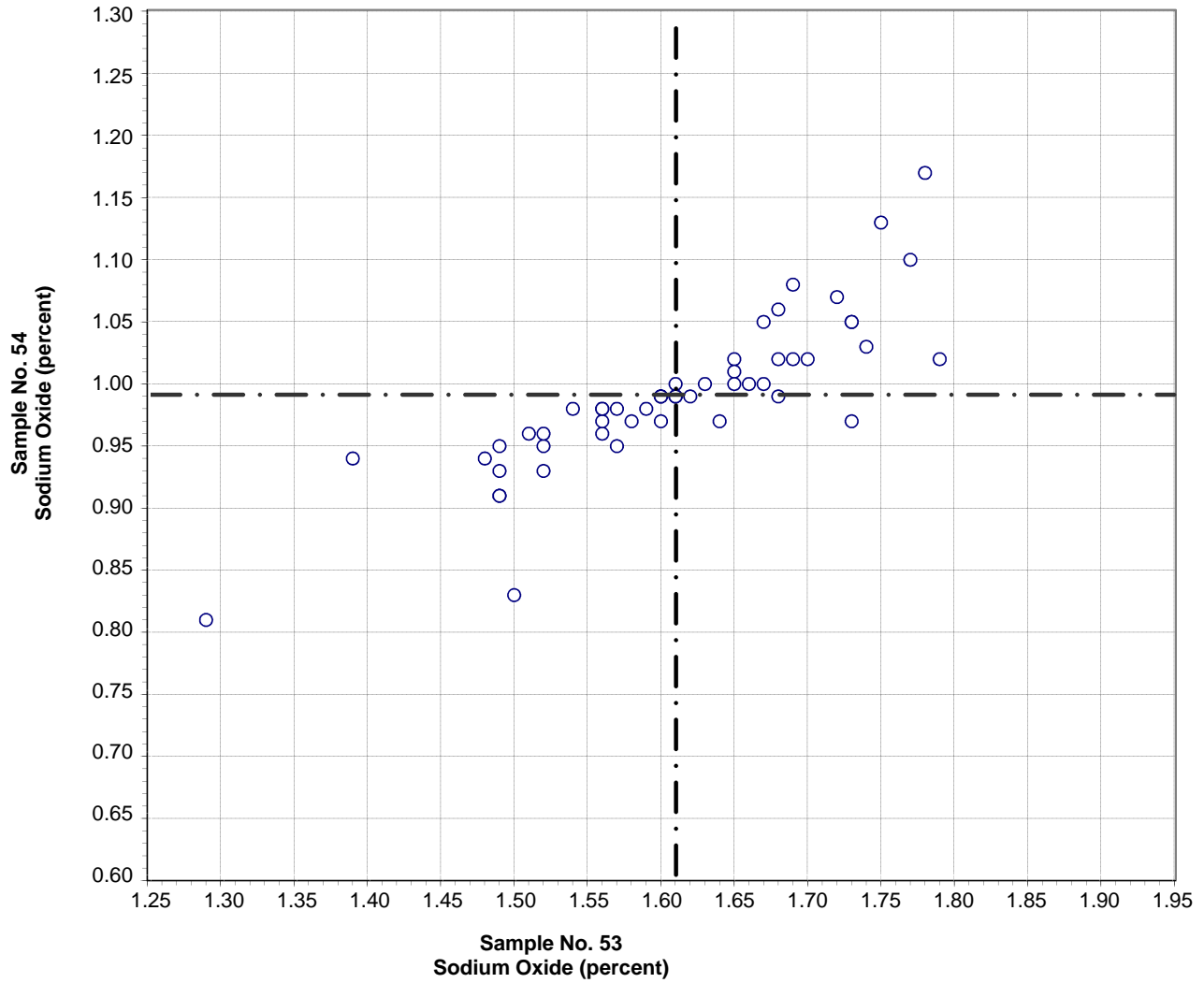


Test No. 70 Loss on Ignition 70 Points

Sample No. 53 Ave 0.10 S.D. 0.04 C.V. 41
Sample No. 54 Ave 0.29 S.D. 0.09 C.V. 30

Labs Eliminated: 43, 125, 1251, 2116

**CCRL Proficiency Sample Program
Sodium Oxide
POZZOLAN Samples No. 53 and No. 54**



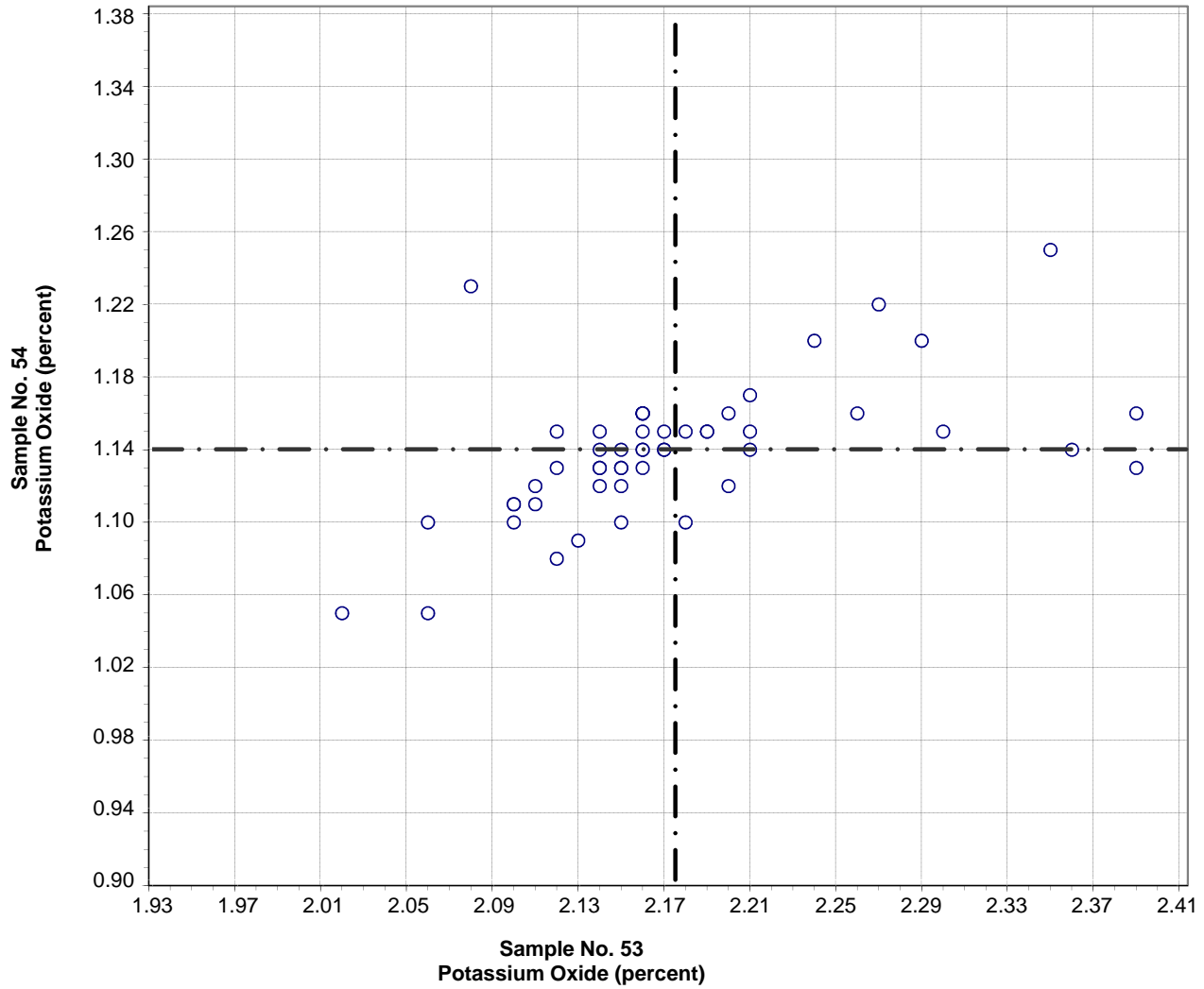
Test No. 90 Sodium Oxide 53 Points

Sample No. 53 Ave 1.61 S.D. 0.10 C.V. 6.2

Sample No. 54 Ave 0.99 S.D. 0.06 C.V. 6.2

Labs Eliminated: 34, 35, 125, 176, 1799, 2116, 3135

**CCRL Proficiency Sample Program
Potassium Oxide
POZZOLAN Samples No. 53 and No. 54**



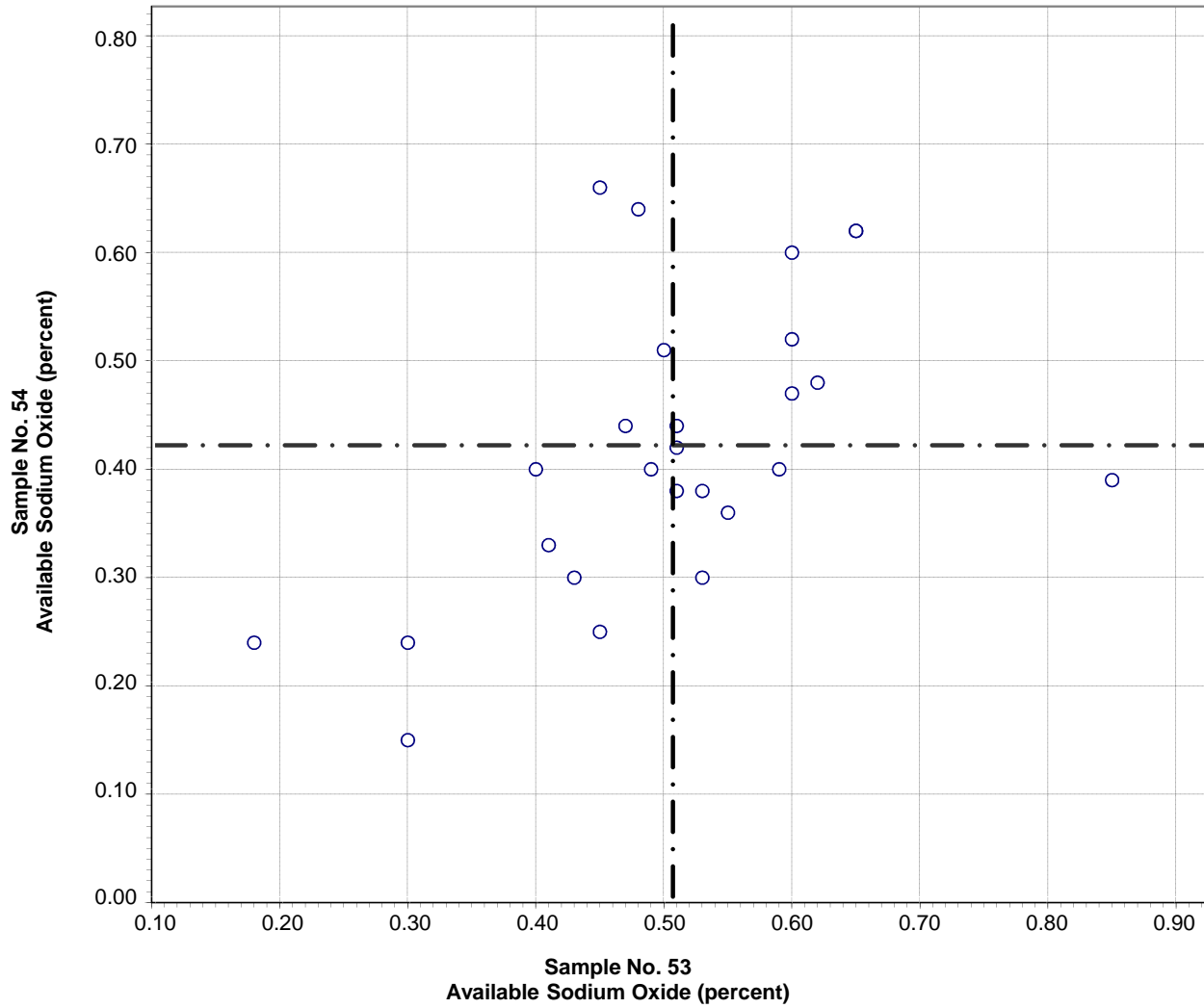
Test No. 100 Potassium Oxide 52 Points

Sample No. 53 Ave 2.17 S.D. 0.08 C.V. 3.6

Sample No. 54 Ave 1.14 S.D. 0.04 C.V. 3.3

Labs Eliminated: 23, 34, 35, 169, 1251, 1799, 2116, 2621

**CCRL Proficiency Sample Program
Available Sodium Oxide
POZZOLAN Samples No. 53 and No. 54**

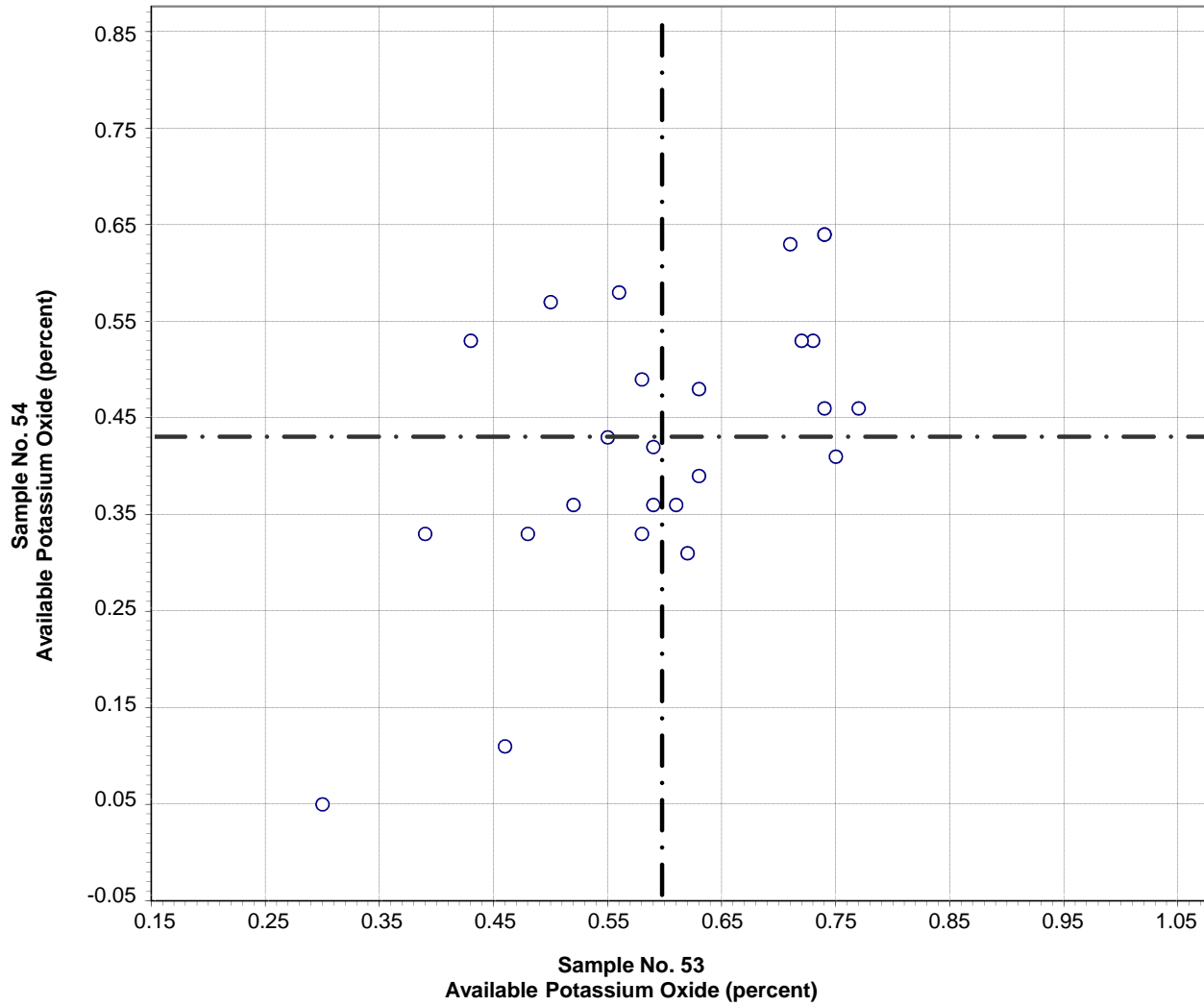


Test No. 91 Available Sodium Oxide 26 Points

Sample No. 53 Ave 0.51 S.D. 0.13 C.V. 26
 Sample No. 54 Ave 0.42 S.D. 0.14 C.V. 32

Labs Eliminated: 2621

**CCRL Proficiency Sample Program
Available Potassium Oxide
POZZOLAN Samples No. 53 and No. 54**

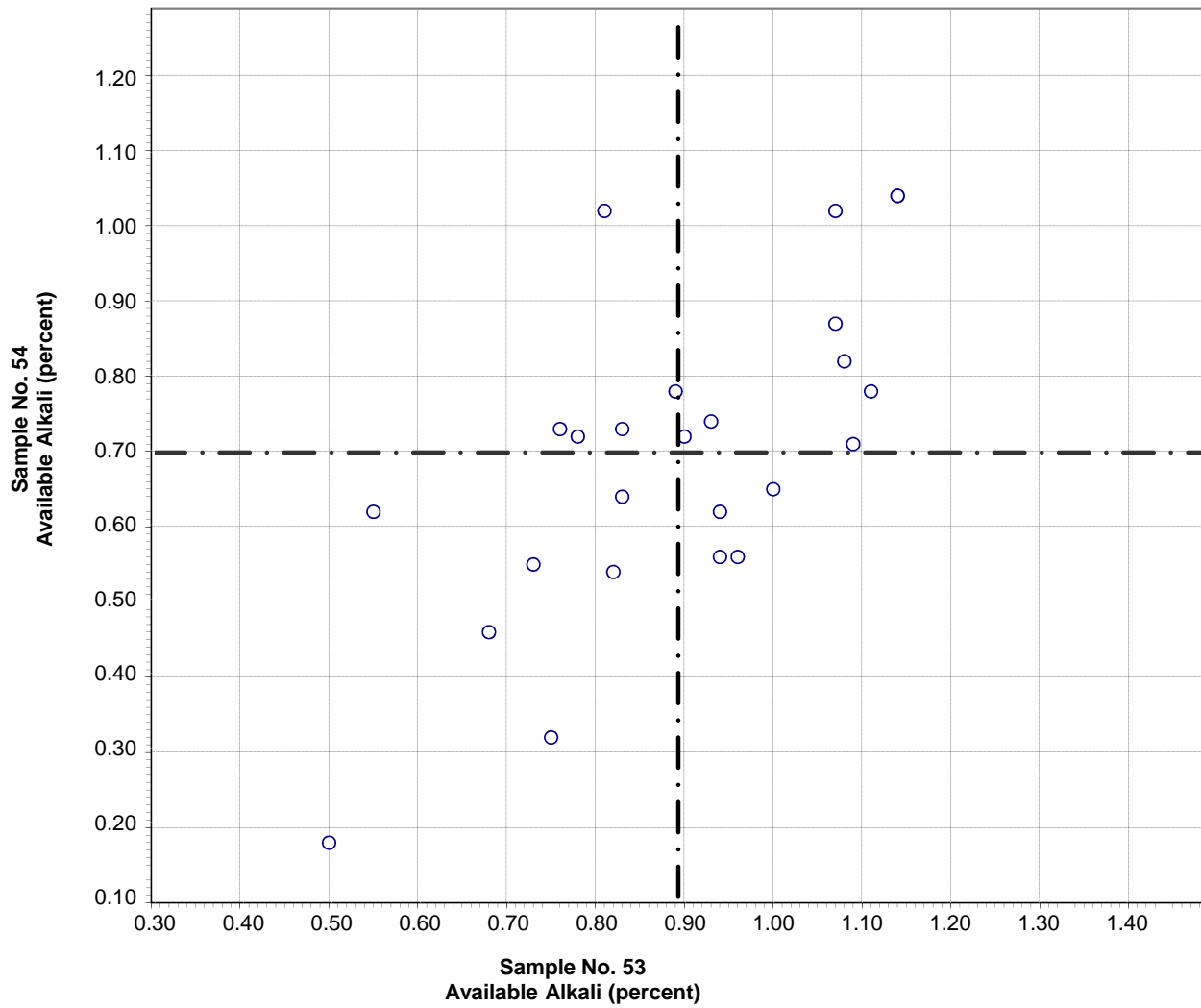


Test No. 93 Available Potassium Oxide 25 Points

Sample No. 53 Ave 0.60 S.D. 0.12 C.V. 21
 Sample No. 54 Ave 0.43 S.D. 0.15 C.V. 34

Labs Eliminated: 52, 2621

**CCRL Proficiency Sample Program
Available Alkali
POZZOLAN Samples No. 53 and No. 54**



Test No. 95 Available Alkali 25 Points

Sample No. 53 Ave 0.89 S.D. 0.18 C.V. 20
 Sample No. 54 Ave 0.70 S.D. 0.21 C.V. 30

Labs Eliminated: 52, 2621

CCRL PROFICIENCY SAMPLE PROGRAM

Pozzolan Proficiency Samples No. 53 and No. 54

Final Report – Physical Results
October 9, 2013

SUMMARY OF RESULTS

Sample No.53

Sample No. 54

Test (unit)	#Labs	Average	S.D.	C.V.	Average	S.D.	C.V.
Density (g/cm³)							
	60	2.46	0.06	2.5	2.58	0.09	3.7
	*53	2.44	0.03	1.4	2.56	0.03	1.1
	* Labs Eliminated - 14, 24, 26, 176, 565, 823, 958						
Fineness - 45 µm Sieve Retained (percent)							
	77	28.49	2.35	8.3	15.85	1.25	7.9
	*72	28.44	1.26	4.4	15.72	0.91	5.8
	* Labs Eliminated - 840, 1323, 1715, 1882, 3135						
Drying Shrinkage (percent)							
	17	-0.000	0.026	-4385	-0.001	0.031	-1669
	*15	-0.003	0.011	-295	-0.003	0.013	-534
	* Labs Eliminated - 148, 3598						
Autoclave Expansion (percent)							
	55	0.08	0.05	61	0.07	0.04	54
	*47	0.09	0.01	15	0.08	0.01	15
	* Labs Eliminated - 24, 26, 36, 41, 70, 125, 565, 1435						
Normal Consistency Water (percent)							
	56	24.7	3.1	12.5	24.8	3.1	12.4
	*53	24.1	0.4	1.6	24.2	0.4	1.5
	* Labs Eliminated - 1, 1435, 2621						
Air Entrainment (percent)							
	10	0.025	0.026	103	0.036	0.035	99
	No Labs Eliminated for This Test						
Strength Activity Index - 7 day (percent)							
	66	85	5.9	6.9	93	5.4	5.8
	*62	85	3.8	4.5	93	3.6	3.9
	* Labs Eliminated - 24, 26, 46, 1323						

CCRL PROFICIENCY SAMPLE PROGRAM

Pozzolan Proficiency Samples No. 53 and No. 54

Final Report – Physical Results
October 9, 2013

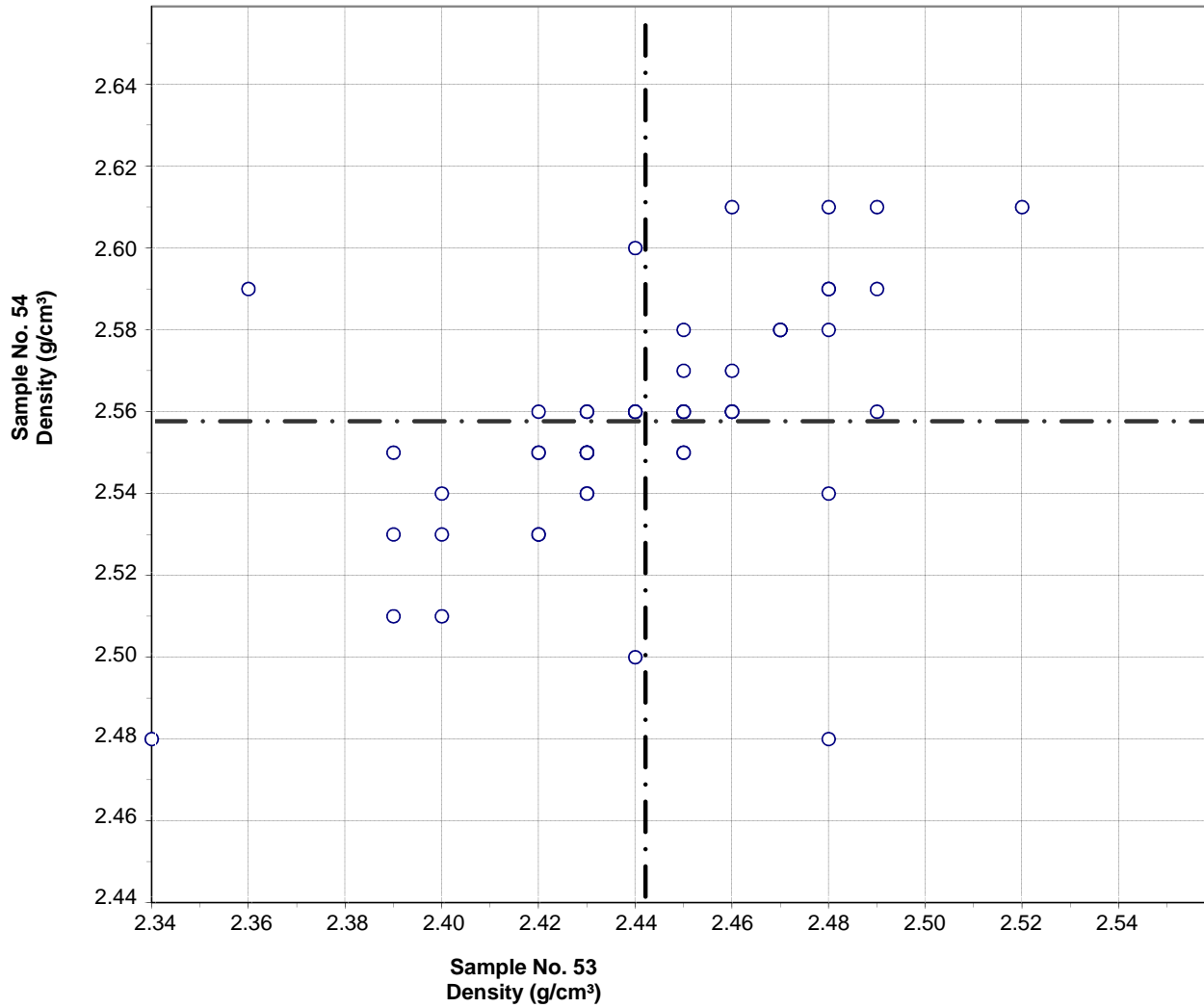
SUMMARY OF RESULTS

Sample No.53

Sample No. 54

Test (unit)	#Labs	Average	S.D.	C.V.	Average	S.D.	C.V.
Strength Activity Index - 28 day (percent)							
	61	92	4.8	5.2	103	4.9	4.8
No Labs Eliminated for This Test							
SAI Water Requirement (percent)							
	65	93	5.4	5.8	93	5.4	5.8
	*63	94	1.7	1.9	94	1.7	1.9
* Labs Eliminated - 3, 1323							
Alkali-Silica Reaction - Reduction of Expansion (percent)							
	11	56	12	22	63	7	11
No Labs Eliminated for This Test							

**CCRL Proficiency Sample Program
Density
POZZOLAN Samples No. 53 and No. 54**

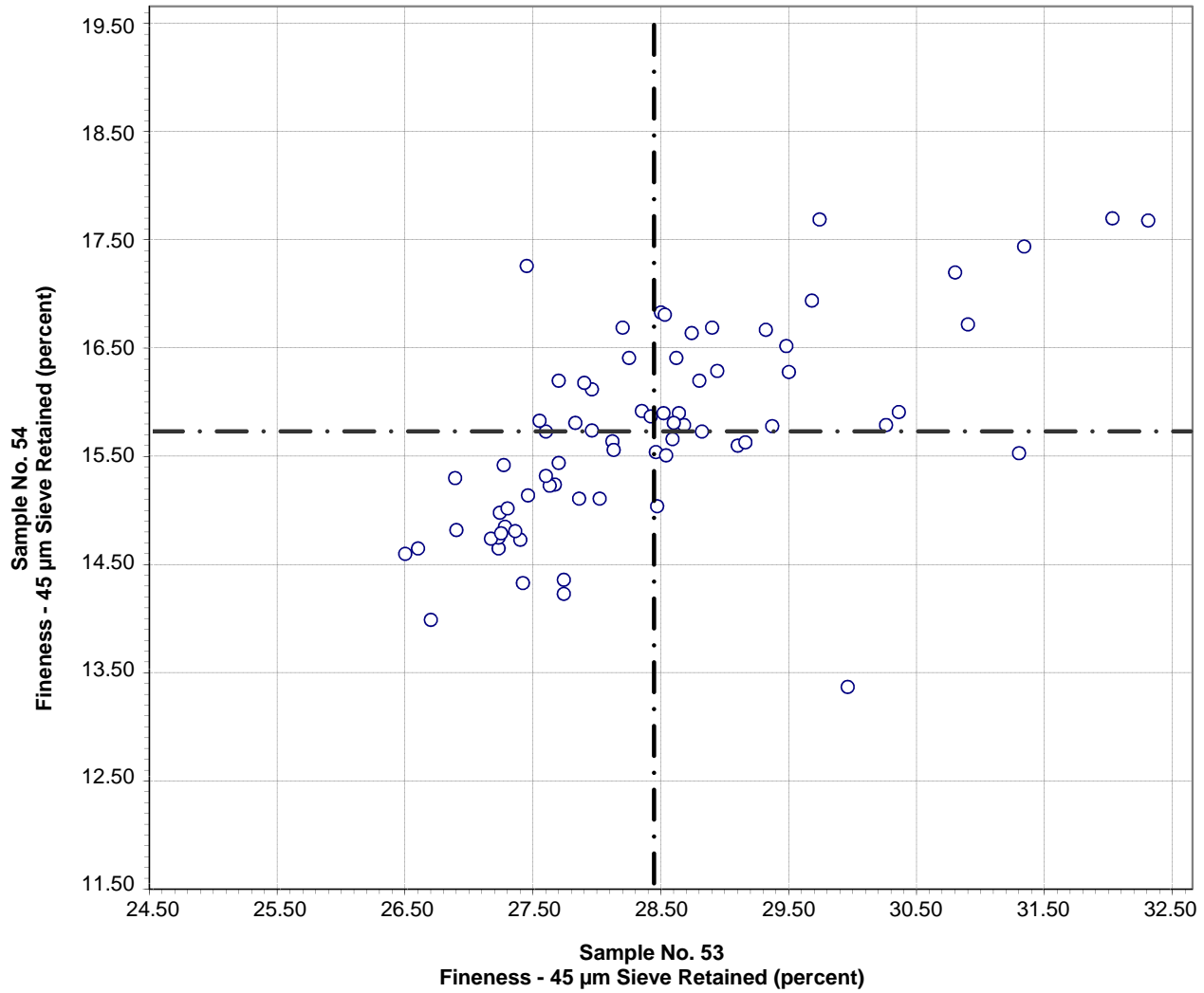


Test No. 310 Density 53 Points

Sample No. 53 Ave 2.44 S.D. 0.03 C.V. 1.4
 Sample No. 54 Ave 2.56 S.D. 0.03 C.V. 1.1

Labs Eliminated: 14, 24, 26, 176, 565, 823, 958

**CCRL Proficiency Sample Program
 Fineness - 45 μ m Sieve Retained
 POZZOLAN Samples No. 53 and No. 54**



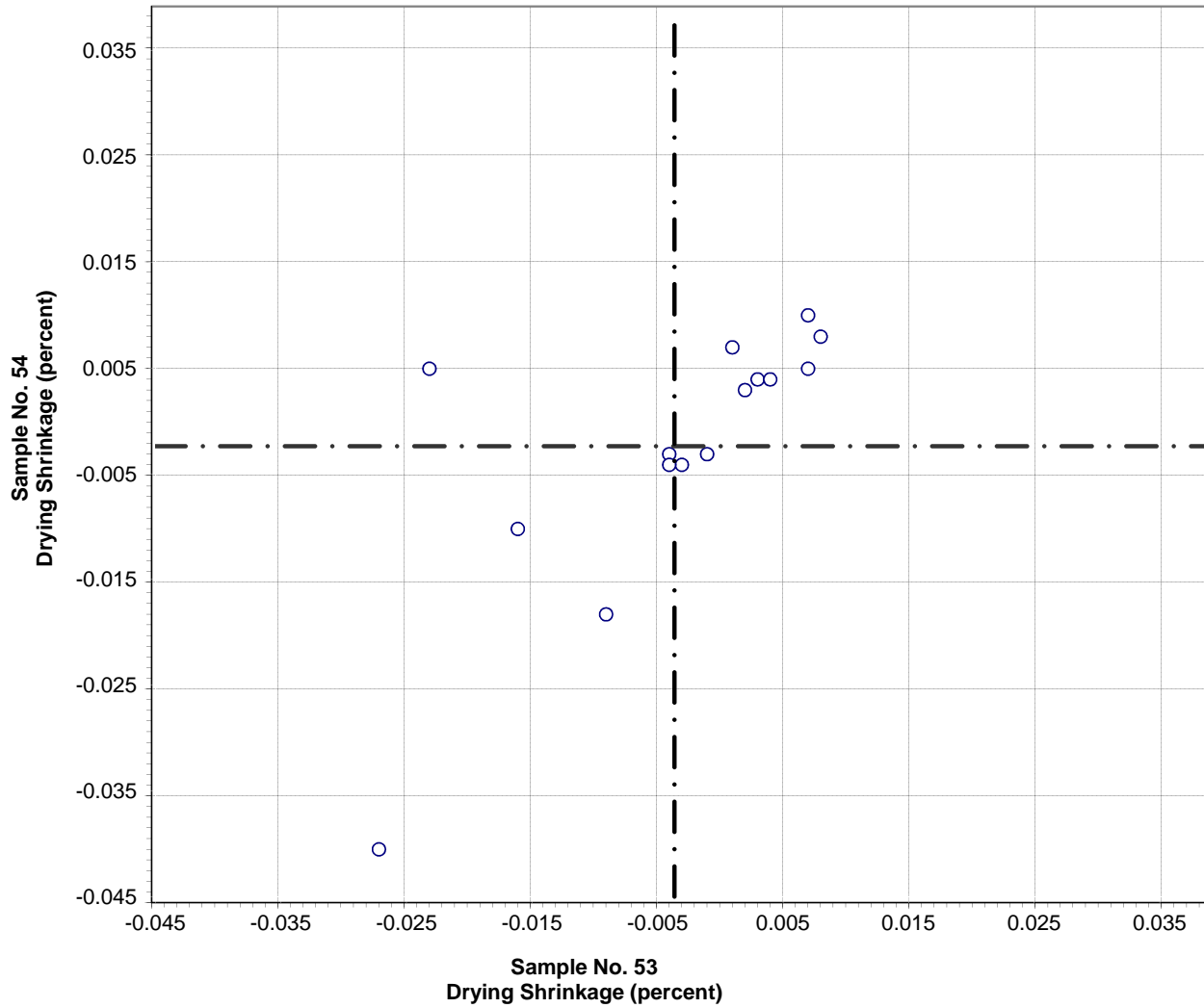
Test No. 281 Fineness - 45 μ m Sieve Retained 72 Points

Sample No. 53 Ave 28.44 S.D. 1.26 C.V. 4.4

Sample No. 54 Ave 15.72 S.D. 0.91 C.V. 5.8

Labs Eliminated: 840, 1323, 1715, 1882, 3135

CCRL Proficiency Sample Program
Drying Shrinkage
POZZOLAN Samples No. 53 and No. 54

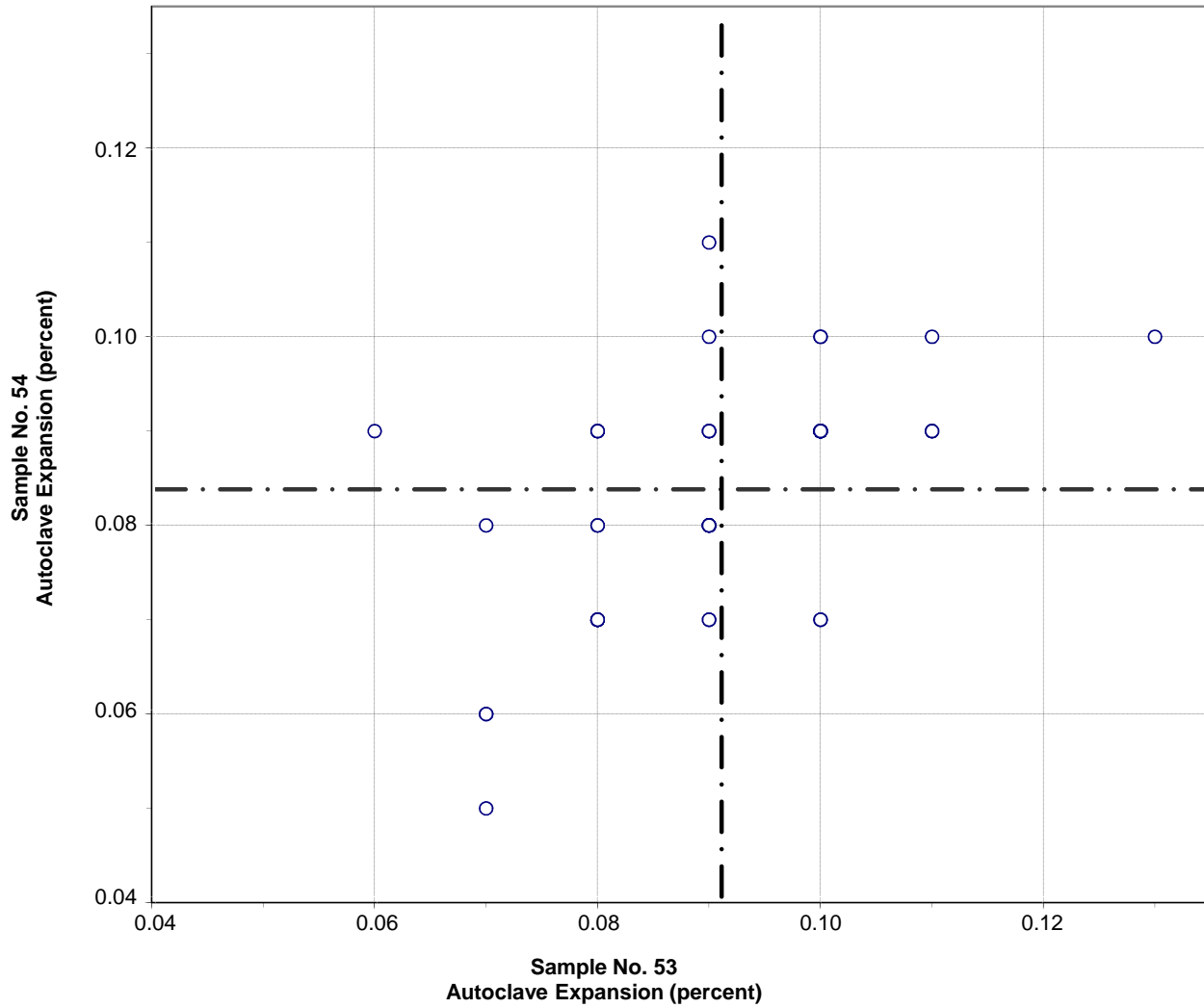


Test No. 340 Drying Shrinkage 15 Points

Sample No. 53 Ave -0.003 S.D. 0.011 C.V. -295
Sample No. 54 Ave -0.003 S.D. 0.013 C.V. -534

Labs Eliminated: 148, 3598

**CCRL Proficiency Sample Program
Autoclave Expansion
POZZOLAN Samples No. 53 and No. 54**



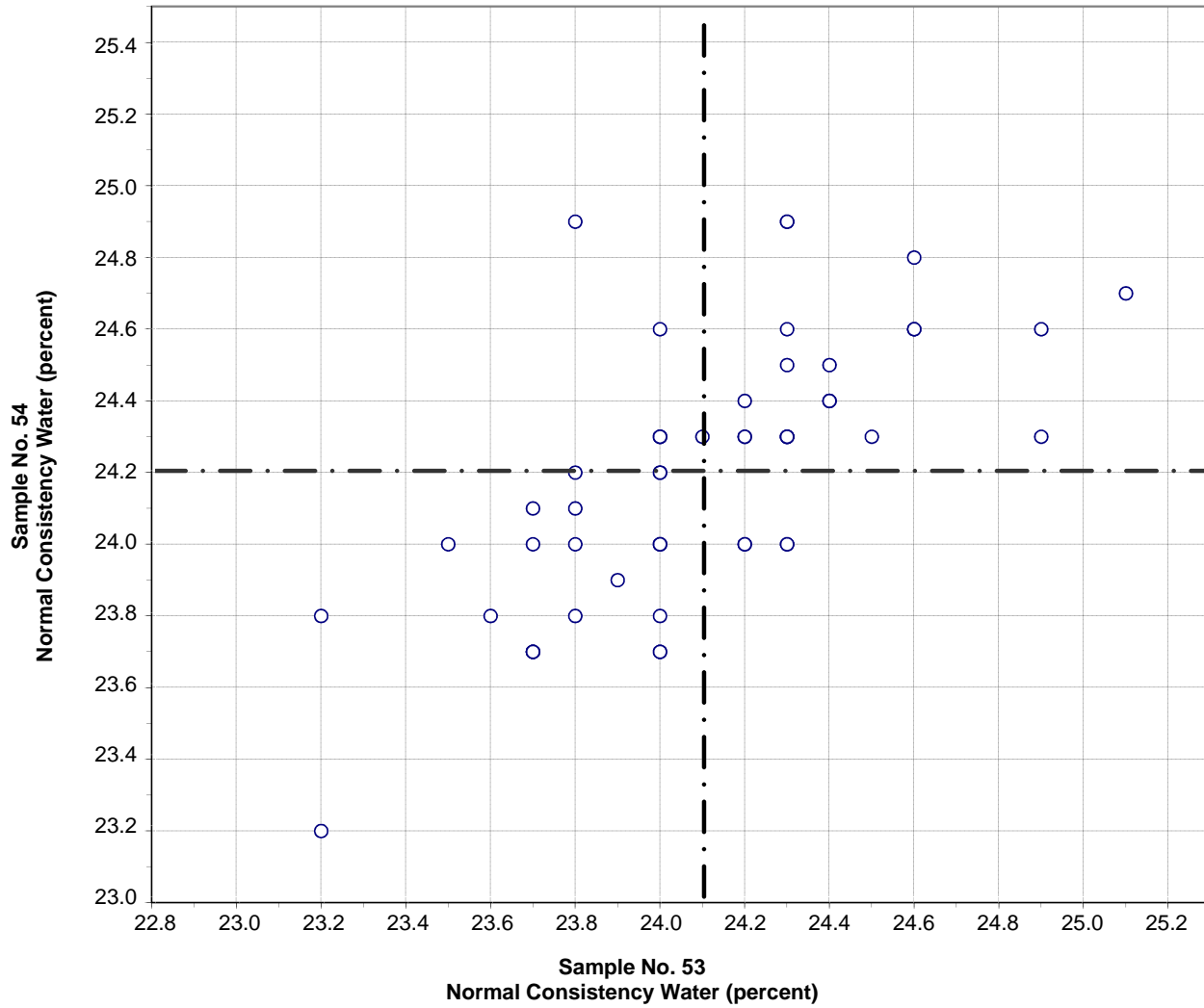
Test No. 160 Autoclave Expansion 47 Points

Sample No. 53 Ave 0.09 S.D. 0.01 C.V. 15

Sample No. 54 Ave 0.08 S.D. 0.01 C.V. 15

Labs Eliminated: 24, 26, 36, 41, 70, 125, 565, 1435

**CCRL Proficiency Sample Program
Normal Consistency Water
POZZOLAN Samples No. 53 and No. 54**

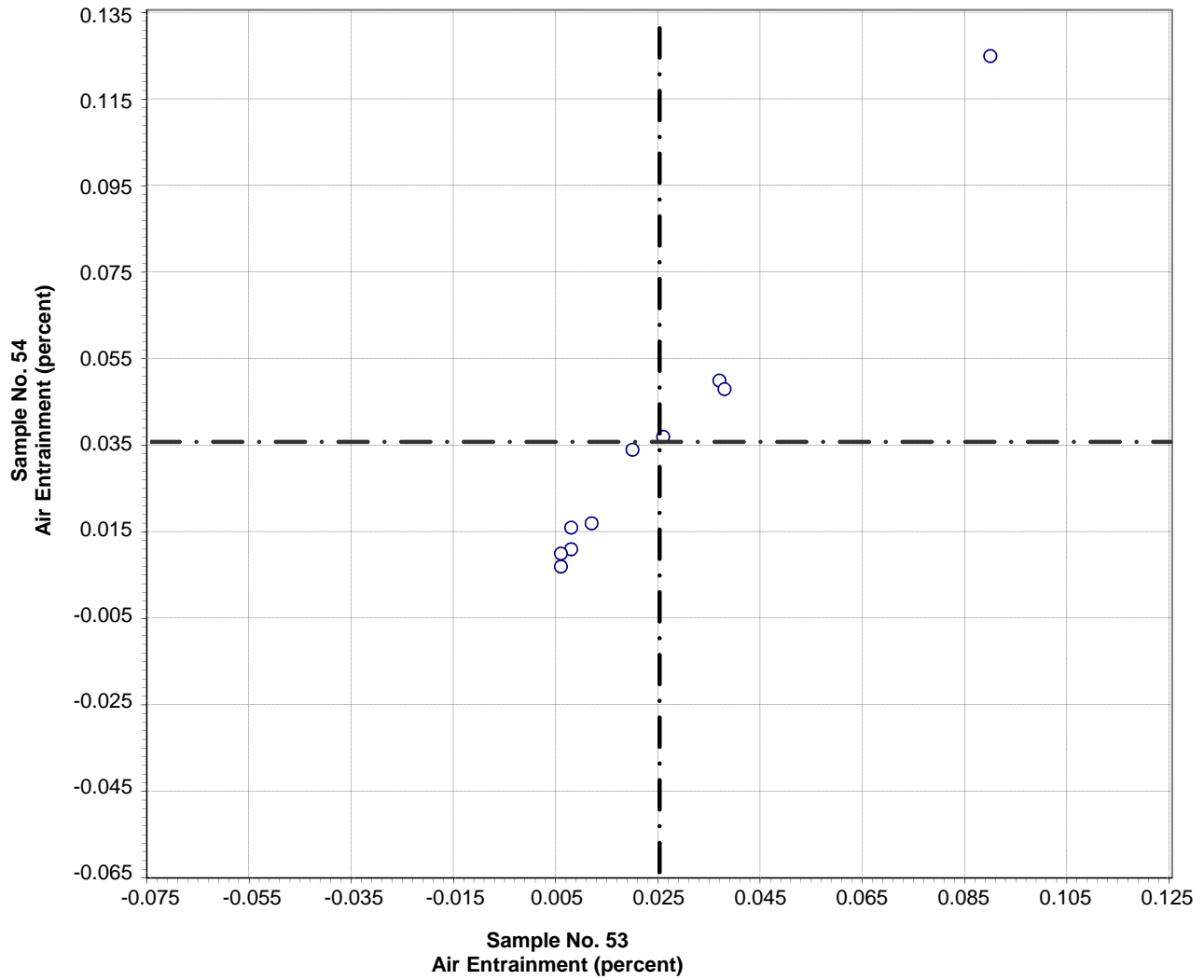


Test No. 110 Normal Consistency Water 53 Points

Sample No. 53 Ave 24.1 S.D. 0.4 C.V. 1.6
 Sample No. 54 Ave 24.2 S.D. 0.4 C.V. 1.5

Labs Eliminated: 1, 1435, 2621

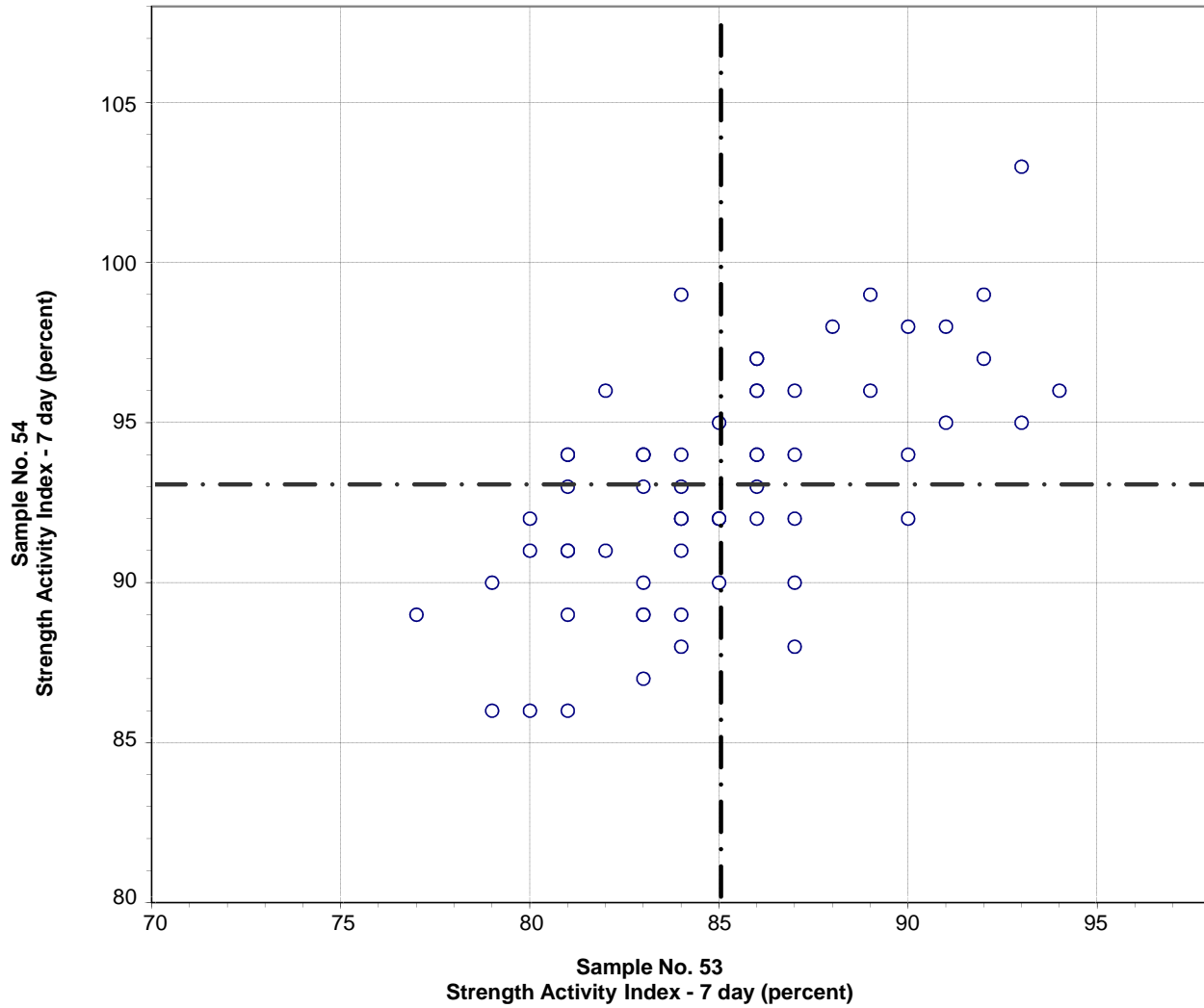
CCRL Proficiency Sample Program
Air Entrainment
POZZOLAN Samples No. 53 and No. 54



Test No. 350 Air Entrainment 10 Points

Sample No. 53	Ave 0.025	S.D. 0.026	C.V. 103
Sample No. 54	Ave 0.036	S.D. 0.035	C.V. 99

**CCRL Proficiency Sample Program
Strength Activity Index - 7 day
POZZOLAN Samples No. 53 and No. 54**

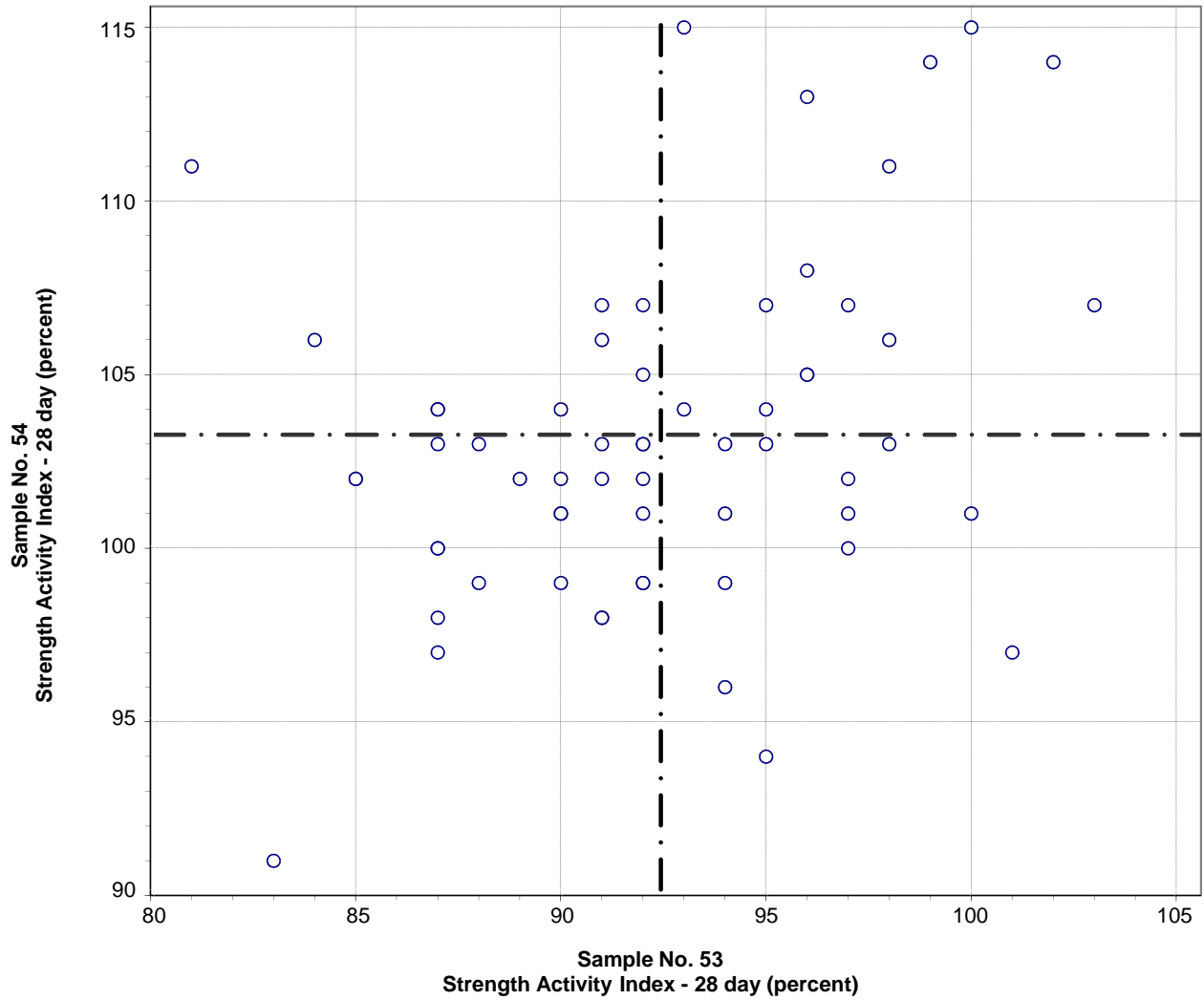


Test No. 359 Strength Activity Index - 7 day 62 Points

Sample No. 53 Ave 85 S.D. 3.8 C.V. 4.5
 Sample No. 54 Ave 93 S.D. 3.6 C.V. 3.9

Labs Eliminated: 24, 26, 46, 1323

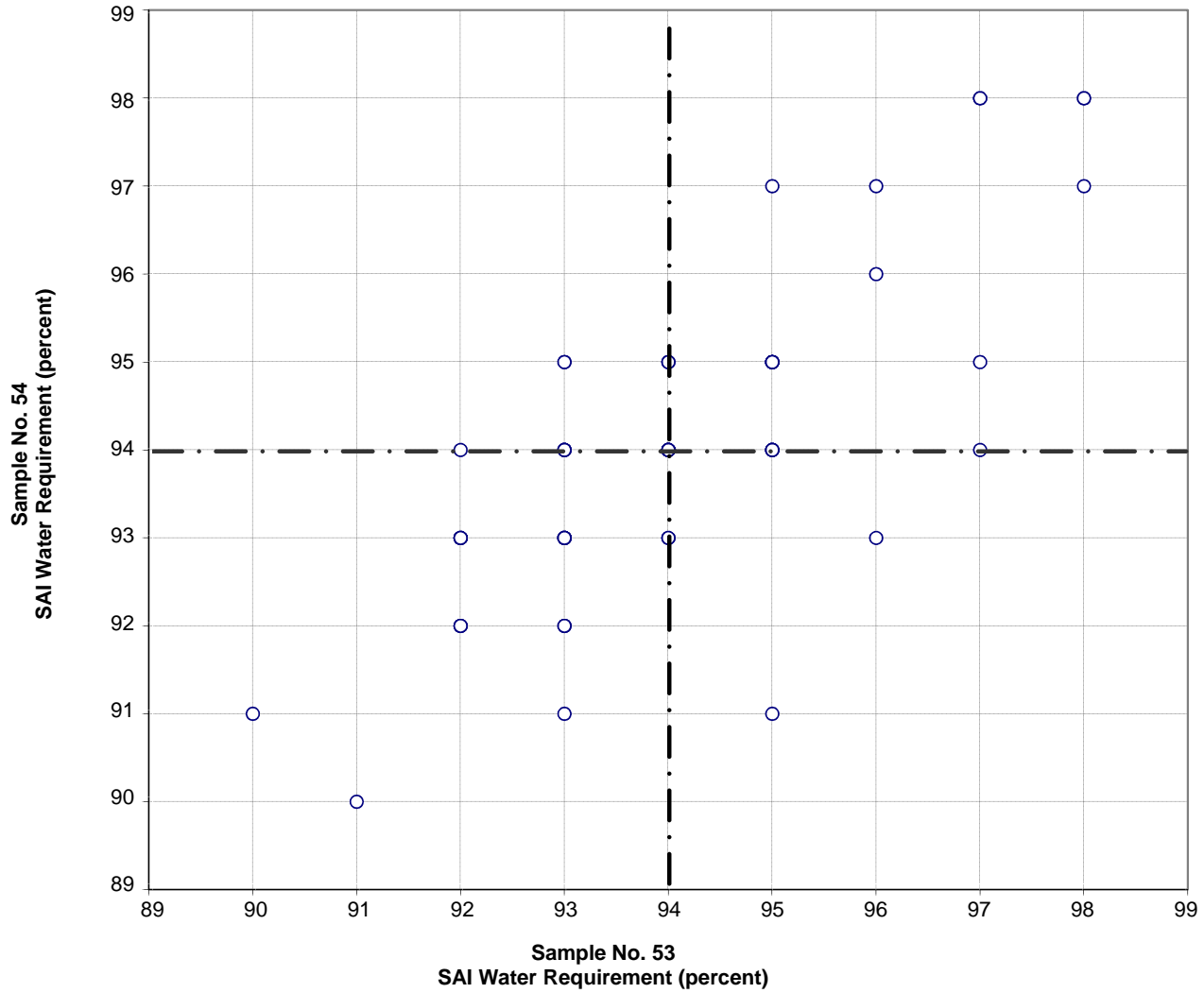
**CCRL Proficiency Sample Program
Strength Activity Index - 28 day
POZZOLAN Samples No. 53 and No. 54**



Test No. 360 Strength Activity Index - 28 day 61 Points

Sample No. 53 Ave 92 S.D. 4.8 C.V. 5.2
 Sample No. 54 Ave 103 S.D. 4.9 C.V. 4.8

**CCRL Proficiency Sample Program
SAI Water Requirement
POZZOLAN Samples No. 53 and No. 54**

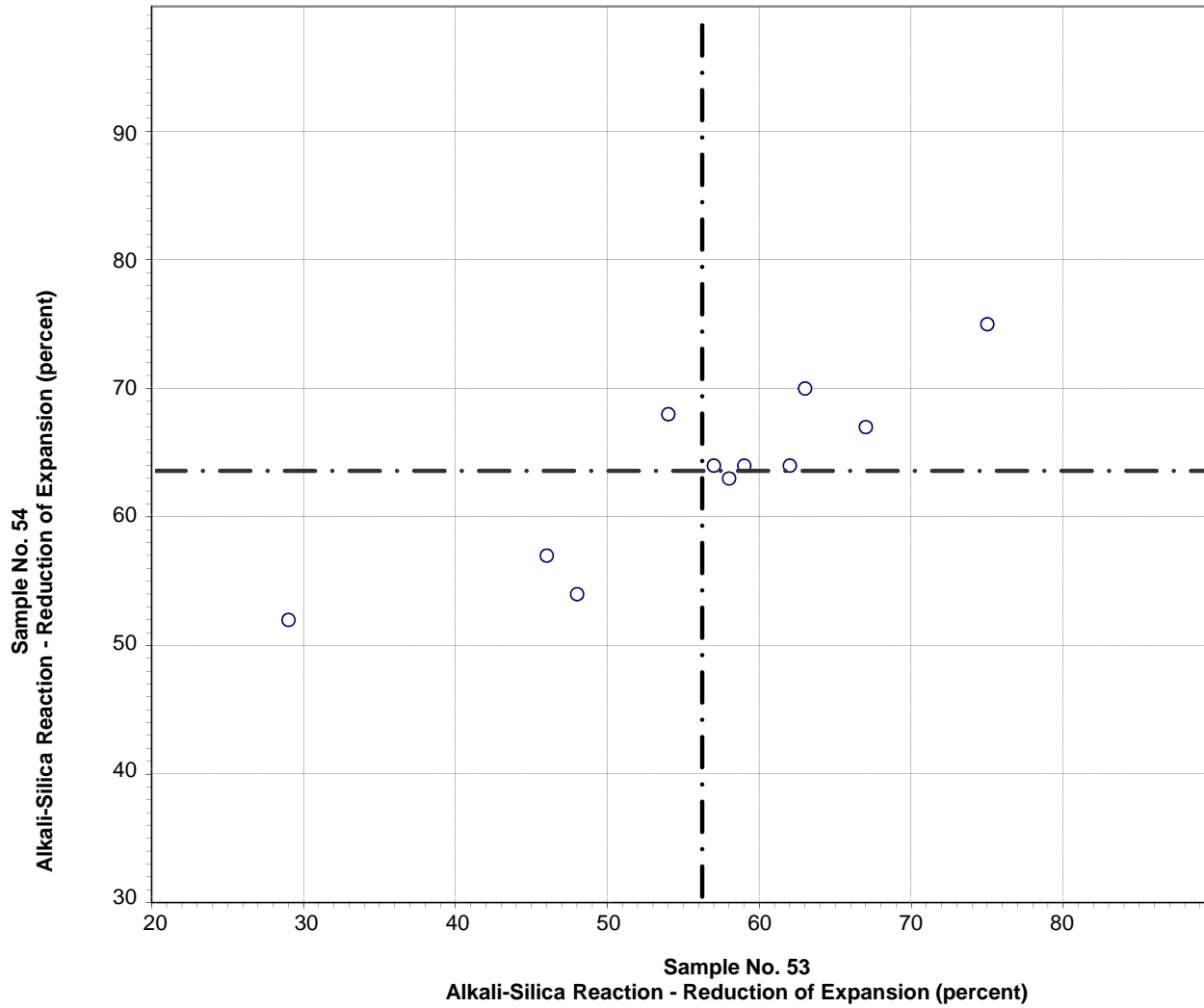


Test No. 370 SAI Water Requirement 63 Points

Sample No. 53 Ave 94 S.D. 1.7 C.V. 1.9
 Sample No. 54 Ave 94 S.D. 1.7 C.V. 1.9

Labs Eliminated: 3, 1323

**CCRL Proficiency Sample Program
Alkali-Silica Reaction - Reduction of Expansion
POZZOLAN Samples No. 53 and No. 54**



Test No. 390 Alkali-Silica Reaction - Reduction of Expansion 11 Points

Sample No. 53	Ave 56	S.D. 12	C.V. 22
Sample No. 54	Ave 63	S.D. 7	C.V. 11