

CEMENT AND CONCRETE REFERENCE LABORATORY
PROFICIENCY SAMPLE PROGRAM

Final Report
Reinforcing Bar Proficiency Samples
Number 3 and Number 4

October 2007



October 3, 2007

To: Participants in the CCRL Reinforcing Bar Proficiency Sample Program

SUBJECT: Final Report for Reinforcing Bar Proficiency Samples No. 3 and No. 4

Following is the report for the current pair of CCRL Reinforcing Bar Proficiency Samples which were distributed in July 2007. These specimens were ASTM A706, Grade 60, #6 bars.

This report consists of a statistical Summary of Results, a set of general Scatter Diagrams, and associated detailed information. The Table of Results with individualized information for laboratory can be downloaded at our website located at: <http://www.ccrl.us/>.

The CCRL Proficiency Sample Programs are intended for internal use by the laboratory as a tool to identify potential problems in laboratory procedures or test equipment and to initiate remedial actions. These programs are designed to complement the CCRL Laboratory Inspection Program as part of a total quality system. Care should be taken when using this program for any other purpose.

Additional samples of these two reinforcing bar and other CCRL samples are available for purchase. These samples may be useful for equipment verification, technician training, and research. Contact CCRL for availability and price.

It is presently anticipated that the next Reinforcing Bar Proficiency Samples will be distributed in July 2008.

Sincerely,

Robin K. Haupt
Supervisor, Proficiency Sample Programs
Cement and Concrete Reference Laboratory
Materials and Construction Research Division
Building and Fire Research Laboratory

TO: Participants in the CCRL Reinforcing Bar Proficiency Sample Program

FROM: Robin K. Haupt, Supervisor, PSP

SUBJECT: Explanation of Final Report on Results of Tests on Reinforcing Bar Proficiency Samples No. 3 and No. 4

This letter, and the material included with it, constitute the final report, and summary of results for the current pair of Reinforcing Bar Proficiency Samples, which were distributed in July 2007. This material includes a Table of Results for Individual laboratory data, a statistical Summary of Results, and a set of general scatter diagrams. Your unique laboratory number is displayed at the top of the Individual Table of Results.

An explanation of the program is contained in the paper: "Statistical Evaluation of Interlaboratory Cement Tests" by J. R. Crandall and R. L. Blaine [View document](#), and "Statistical Aspects of the Cement Testing Program" by W.J. Youden [View document](#), which can be found in Volume 59, Proceedings of the 62nd Annual Meeting of the Society, June 25, 1959, American Society for Testing and Materials.

The test results for average spacing, gap, and average height (more evident before outlying test result were removed) displayed a rather wide distribution which can be seen in the scatter diagrams. If your test results were eliminated or located in the "tails" of the distribution you should review your procedure for determining these results.

Laboratory Ratings

Each laboratory receives an individualized Laboratory Ratings. Each line of the ratings shows the test title and the reporting unit in the first two columns. After that it lists in order, the laboratory's results for the odd and even numbered samples, overall averages for the odd and even numbered samples, and the laboratory's ratings for the odd and even samples. Please note that individual laboratory ratings were not given for some test results. These results were gathered for information at the request of consulting ASTM Committee member.

The ratings for the individual laboratory were determined in the manner described by Crandall and Blaine using a rating scale of 1 to 5 instead of 0 to 4. The ratings have no valid standing beyond showing the difference between the individual laboratory result and the average for a particular test.

The following table details the relationship between the ratings and the averages.

<u>Ratings</u>	<u>Range (Number of Standard Deviations)</u>	<u>Number (Per 100) of Laboratories achieving the rating</u> ¹
5	Less than 1	69
4	1 to 1.5	18
3	1.5 to 2	9
2	2 to 2.5	3
1	Greater than 2.5	1

¹Youden, W.J., "Statistical Aspects of the Cement Testing Program", *Proceedings of the American Society for testing and Materials Volume 59*, 1959.

The sign of the rating merely shows whether the result reported was greater or less than the average obtained. In cases where some laboratories' results are eliminated, averages, standard deviations, coefficients of variation, and the ratings of the other laboratories' results, are recalculated using the data remaining after the elimination. Since the laboratory ratings given are the results from this one series of tests, you need not attach too much significance to a single low rating, or pair of ratings, from this one series. A continuing tendency to get low ratings on several pairs of samples should lead a laboratory to consider the types of error, systematic and random, contribute to ratings that are low. Systematic error, which is indicated by low ratings with the same signs on each pair of samples, means a consistent error is occurring in equipment and/or test procedures. One indication of random error is low ratings on both samples with different signs. Since systematic error occurs with more regularity, its cause is generally easier to find than the cause of random error.

Summary of Results

The Summary of Results provide the statistical summary for each test. Each line lists the test, the number of participants represented, the averages, standard deviations and coefficients of variations. When necessary the data from the test is represented in two lines, one line with all results reported, and then a second line with outlying results omitted. Sometimes two or more recalculations are required to eliminate all outliers from the test. In these cases, all of the laboratories omitted in previous recalculations are also omitted in subsequent ones. Results omitted are values that are more than three standard deviations from the mean of one or both samples. Elimination of these outlying results may little effect on the average, but may have a more pronounced effect on the standard deviation and coefficient of variation.

Scatter Diagrams

General scatter diagrams are supplied with this report. Crandall and Blaine describe the manner of preparing scatter diagrams, and their interpretation, in the paper published in the 1959 ASTM Proceedings.

Using the results received from each laboratory, a scatter diagram is generated for each test method by plotting the value for the odd numbered samples on the *X*, or horizontal axis, against the value for the even numbered samples on the *Y*, or vertical axis. Vertical and horizontal dashed lines, which divide the diagrams into four sections or quadrants, place the average values for the odd and even numbered samples, respectively. The first line of print under the diagram includes the test number, as given on the data sheet, the test title, and the number of data points on the diagrams. The number of plotted points may not agree with the total number of data pairs included in the analysis because a few points may be off the diagram, and some points may represent several data pairs, which are identical. Laboratories whose points are off the diagram will have a rating of ± 1 for that particular test.

As described in Crandall and Blaine, a tight circular pattern of points around the intersection of the median lines is the ideal situation. Stretching out of the pattern into the first (upper right) and third (lower left) quadrants, suggests some kind of bias, or tendency for laboratories to get high or low results on both samples. Examination of the scatter diagrams indicates strong evidence of bias on many tests.

CCRI Proficiency Sample Program
Reinforcing Bar Samples No. 3 and No. 4
Final Report - September 28, 2007

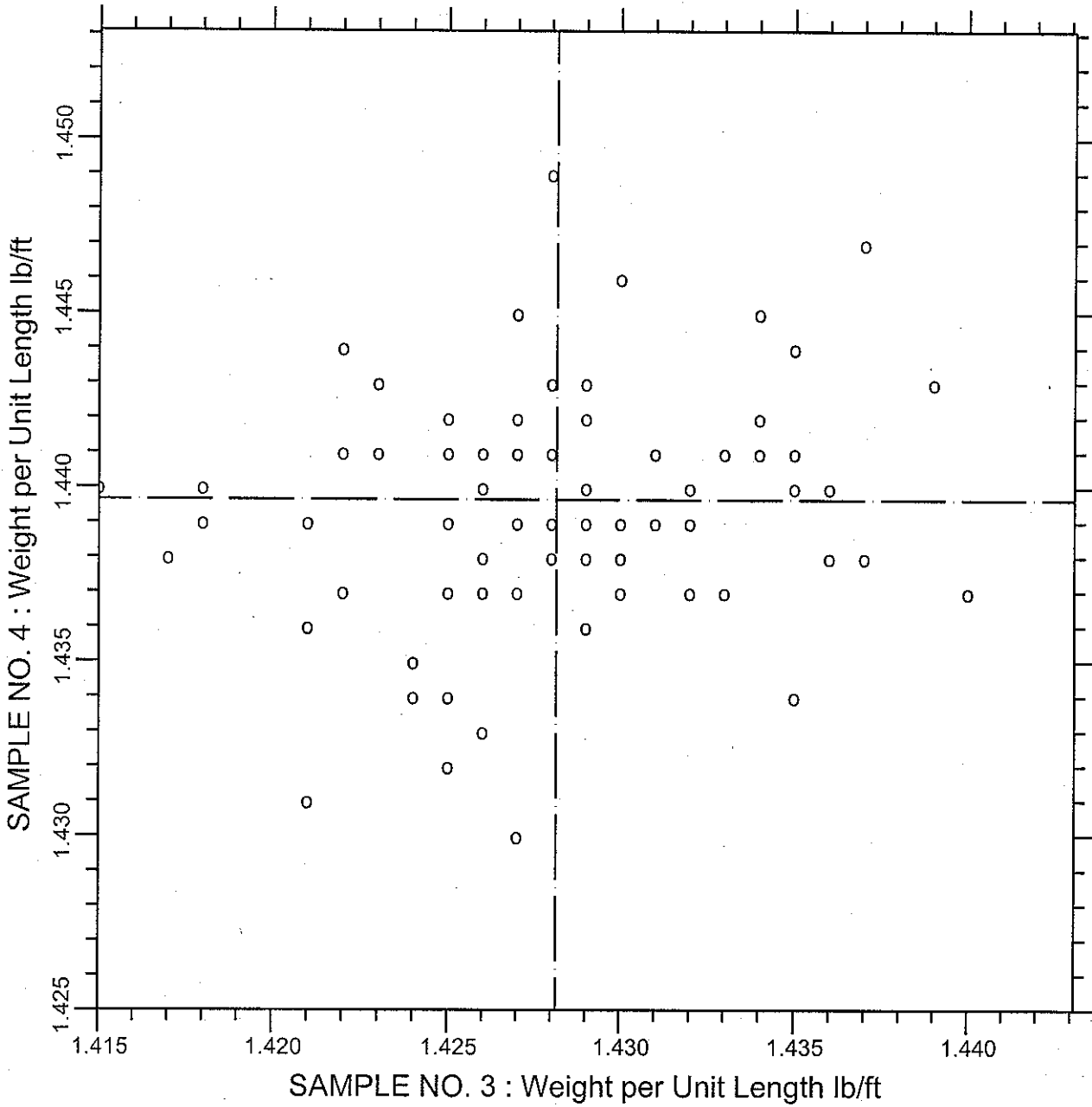
SUMMARY OF RESULTS

			Sample No. 3			Sample No. 4		
Test		#Labs	Average	S.D.	C.V.	Average	S.D.	C.V.
Weight per Length	lb/ft	88	1.461	0.32	22.1	1.472	0.32	22.0
Weight per Length	lb/ft	* 79	1.428	0.0050	0.354	1.440	0.0045	0.312
Average Spacing	inch	85	0.449	0.036	8.01	0.454	0.030	6.65
Average Spacing	inch	* 77	0.454	0.0073	1.62	0.456	0.0085	1.86
Average Height	inch	85	0.057	0.046	79.6	0.056	0.044	78.7
Average Height	inch	* 80	0.050	0.0033	6.59	0.048	0.0048	9.97
Gap	inch	84	0.209	0.042	20.1	0.174	0.052	30.2
Gap	inch	* 81	0.204	0.035	17.0	0.170	0.049	28.6
Tensile Strength	psi	90	93972	11140.4	11.8	93936	11150.7	11.9
Tensile Strength	psi	* 82	96089	1287.8	1.34	96032	1304.2	1.36
Yield Strength	psi	89	67142	8034.8	12.0	67941	8195.3	12.1
Yield Strength	psi	* 83	68632	1591.7	2.32	69452	1549.7	2.23
Elongation	prcnt	90	17.0	1.9	11.2	17.8	1.9	10.4
Elongation	prcnt	* 86	16.8	1.04	6.20	17.8	0.98	5.53

* ELIMINATED LABS: Data over three S.D. from the mean

Weight per Unit Length	920 1226 1154 1364 22 552 823 2109 2149
Average Spacing	22 823 1895 920 1154 1602 2146 2149
Average Height	1226 43 1602 1777 2149
Gap	21 37 1790
Tensile Strength	51 52 920 1991 1154 1226 1591 2420
Yield Strength	51 52 920 823 1991 2420
Elongation	52 22 1154 1189

CCRL PROFICIENCY SAMPLE PROGRAM
 Weight per Unit Length
 REINFORCING BAR SAMPLES NO. 3 & NO. 4



TEST NO.1010 Weight per Unit Length 78 POINTS

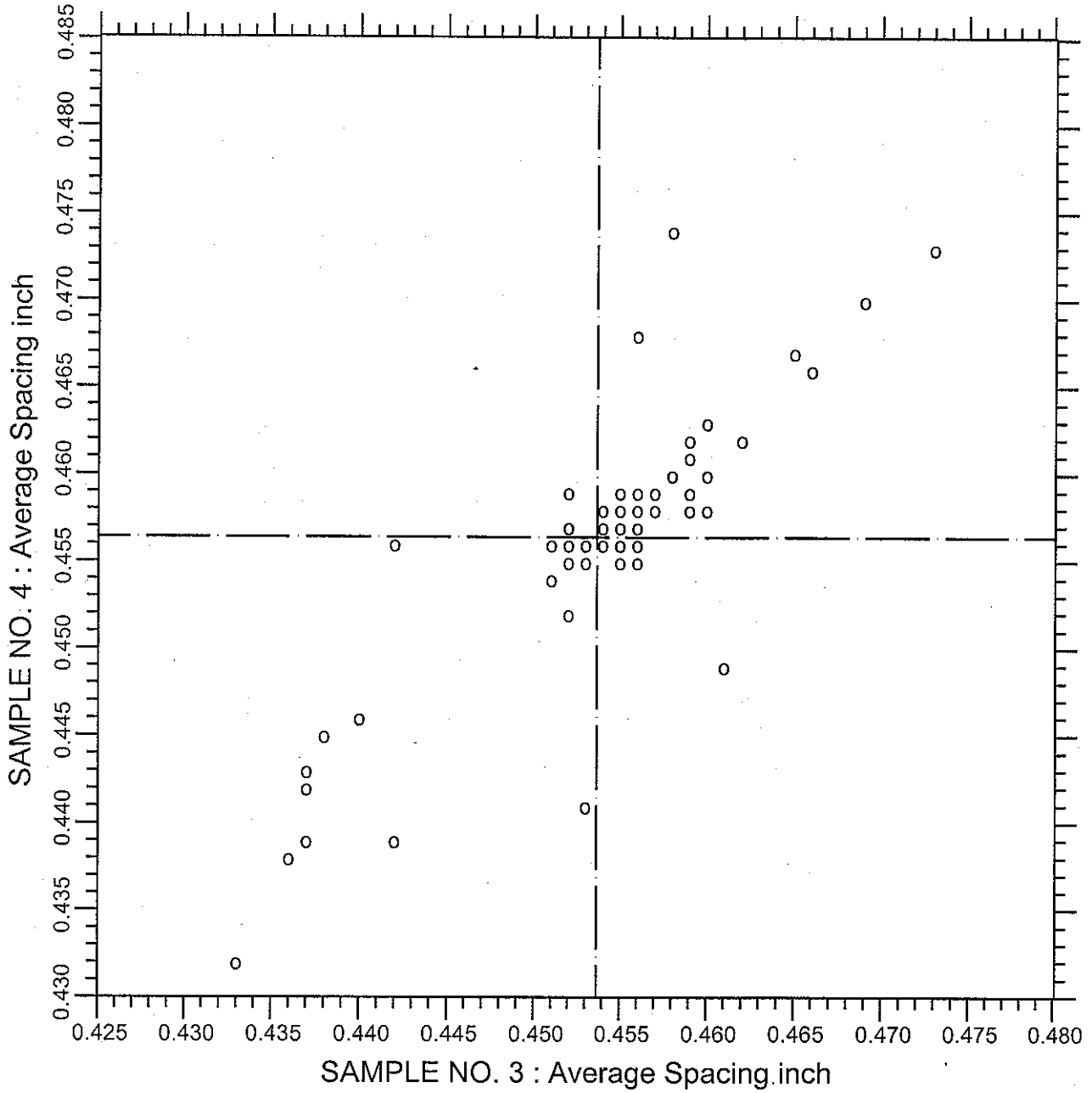
SAMPLE NO. 3 AVE 1.42815 S.D. 0.0050 C.V. 0.354

SAMPLE NO. 4 AVE 1.43965 S.D. 0.0045 C.V. 0.312

LABS ELIMINATED 920 1226 1154 1364 22 552 823 2109 2149

LABS OFF DIAGRAM 43

CCRL PROFICIENCY SAMPLE PROGRAM
Average Spacing
REINFORCING BAR SAMPLES NO. 3 & NO. 4



TEST NO.1020 Average Spacing 76 POINTS

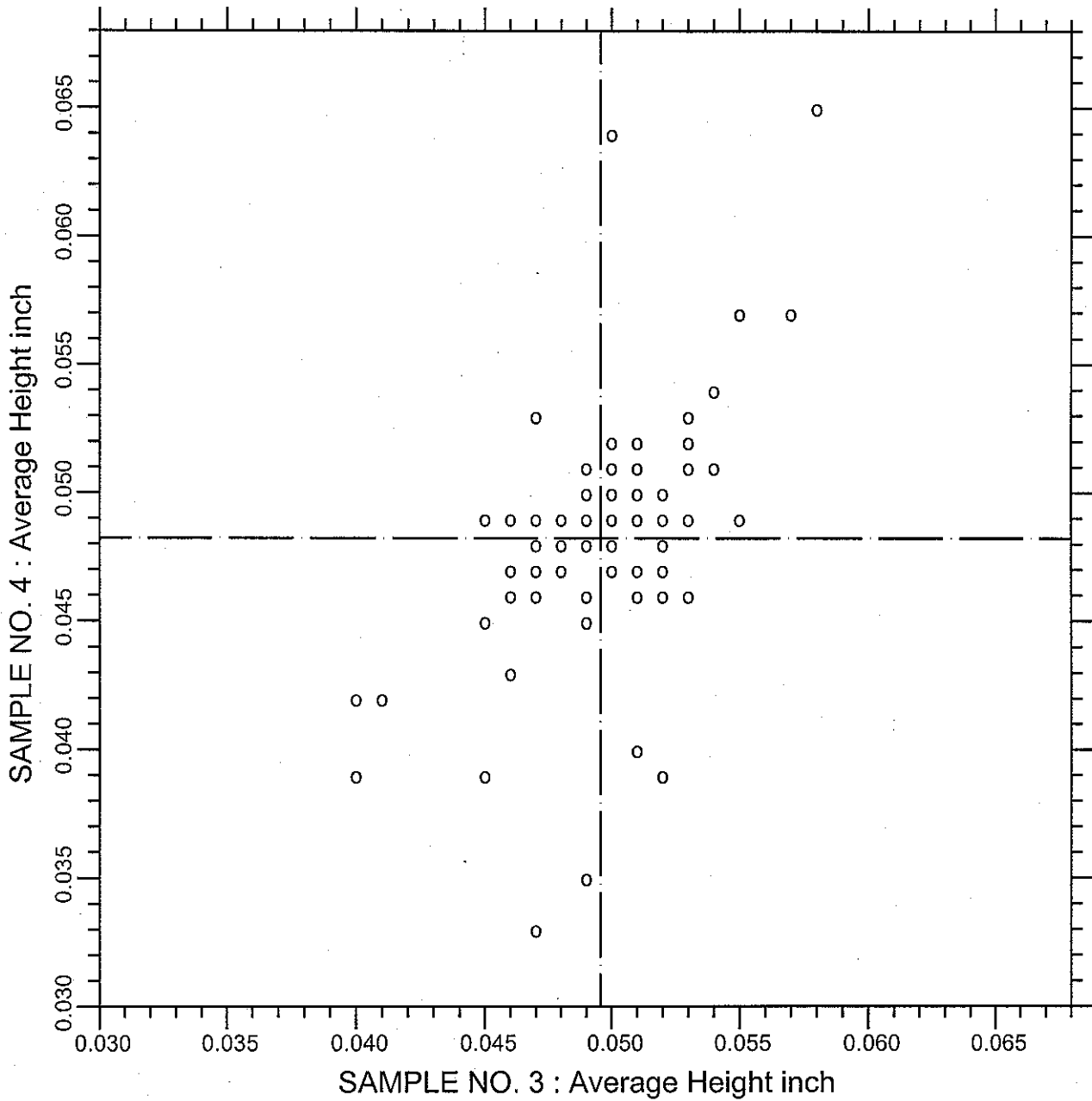
SAMPLE NO. 3 AVE 0.45366 S.D. 0.0073 C.V. 1.62

SAMPLE NO. 4 AVE 0.45640 S.D. 0.0085 C.V. 1.86

LABS ELIMINATED 22 823 1895 920 1154 1602 2146 2149

LABS OFF DIAGRAM 1790

CCRL PROFICIENCY SAMPLE PROGRAM
Average Height
REINFORCING BAR SAMPLES NO. 3 & NO. 4



TEST NO.1030

Average Height

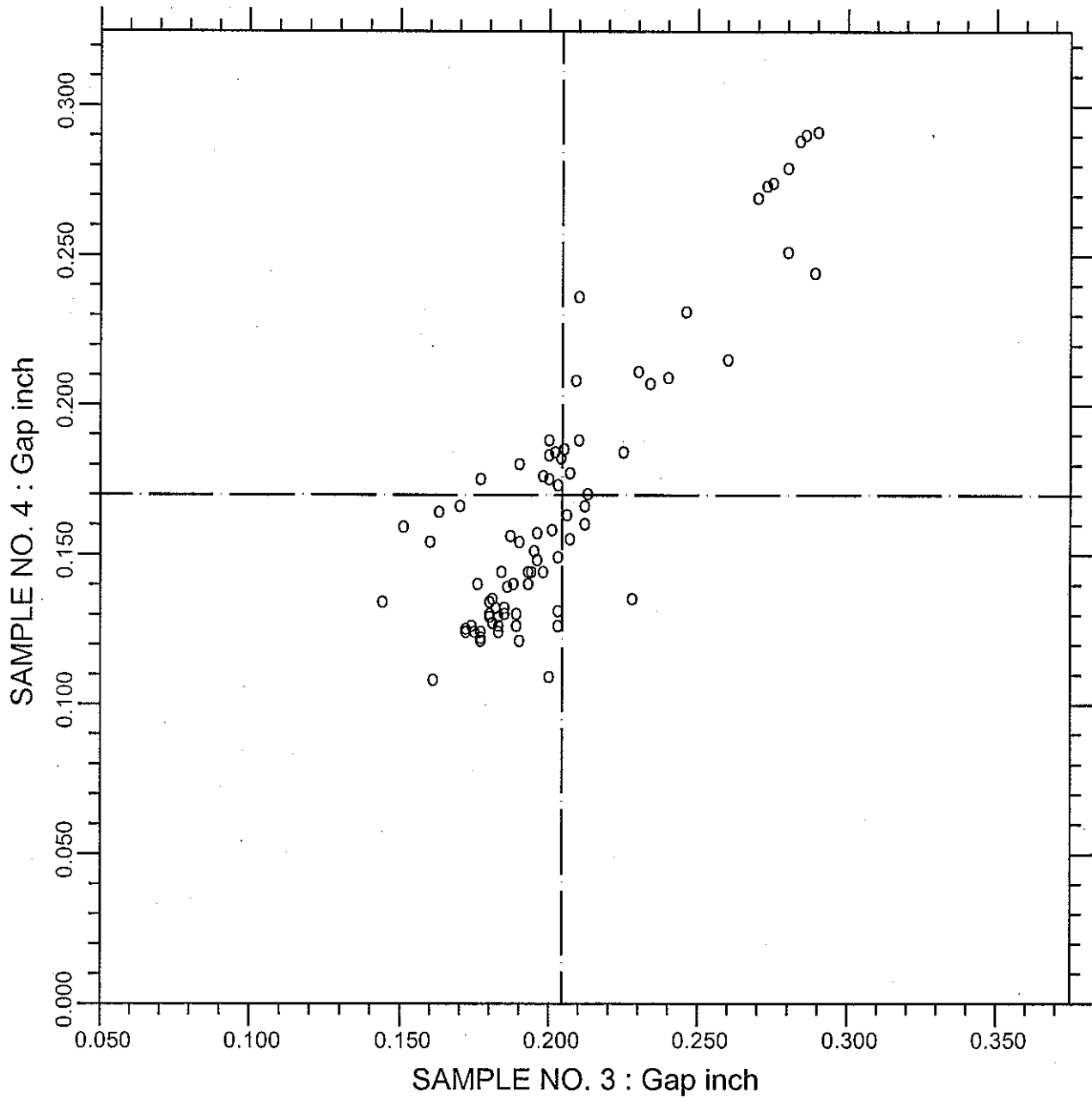
80 POINTS

SAMPLE NO. 3 AVE 0.04956 S.D. 0.0033 C.V. 6.59

SAMPLE NO. 4 AVE 0.04822 S.D. 0.0048 C.V. 9.97

LABS ELIMINATED 1226 43 1602 1777 2149

CCRL PROFICIENCY SAMPLE PROGRAM
 Gap
 REINFORCING BAR SAMPLES NO. 3 & NO. 4



TEST NO.1040

Gap

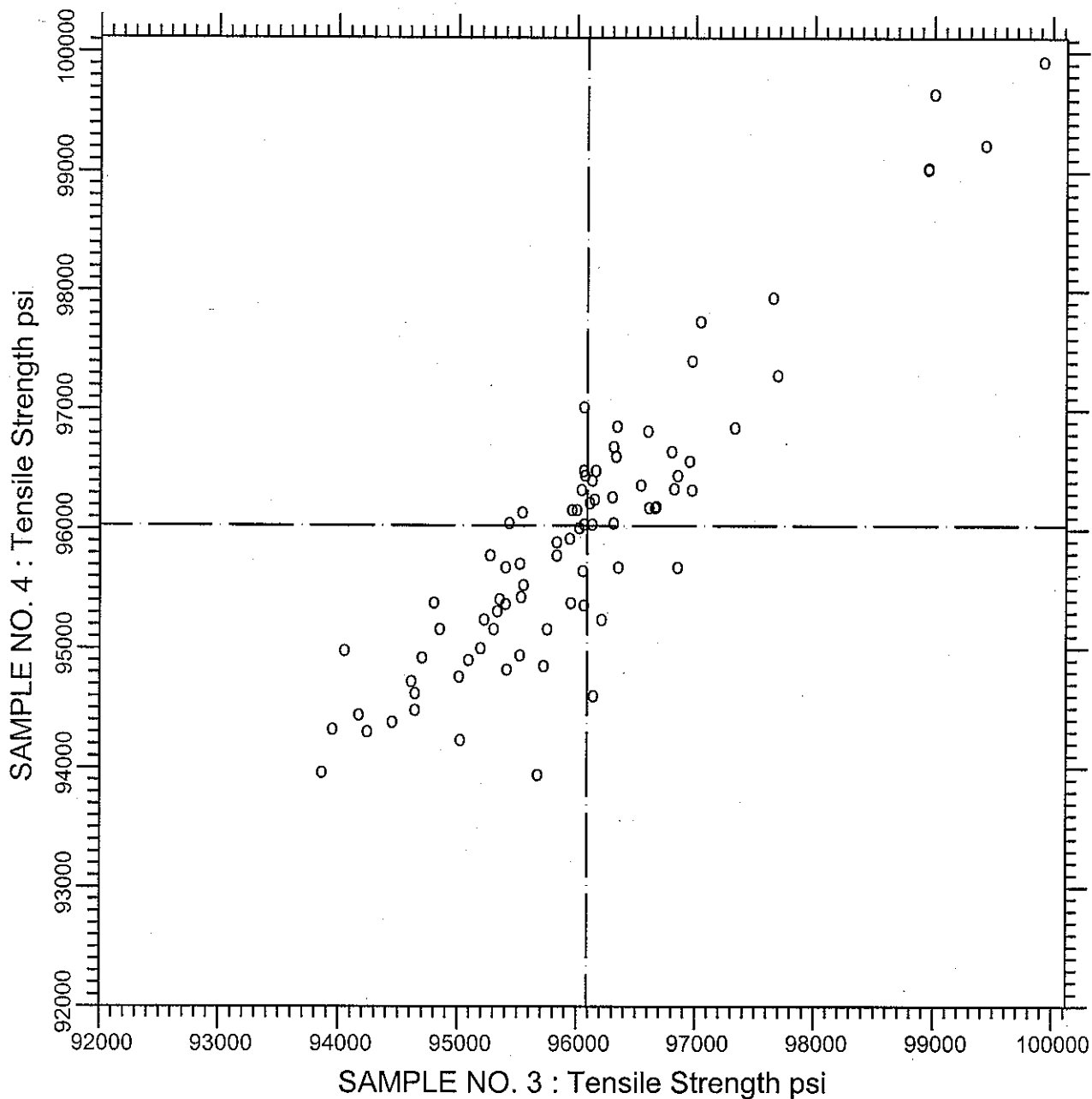
81 POINTS

SAMPLE NO. 3 AVE 0.2045 S.D. 0.035 C.V. 17.0

SAMPLE NO. 4 AVE 0.1699 S.D. 0.049 C.V. 28.6

LABS ELIMINATED 21 37 1790

CCRL PROFICIENCY SAMPLE PROGRAM
Tensile Strength
REINFORCING BAR SAMPLES NO. 3 & NO. 4



TEST NO.1050

Tensile Strength

81 POINTS

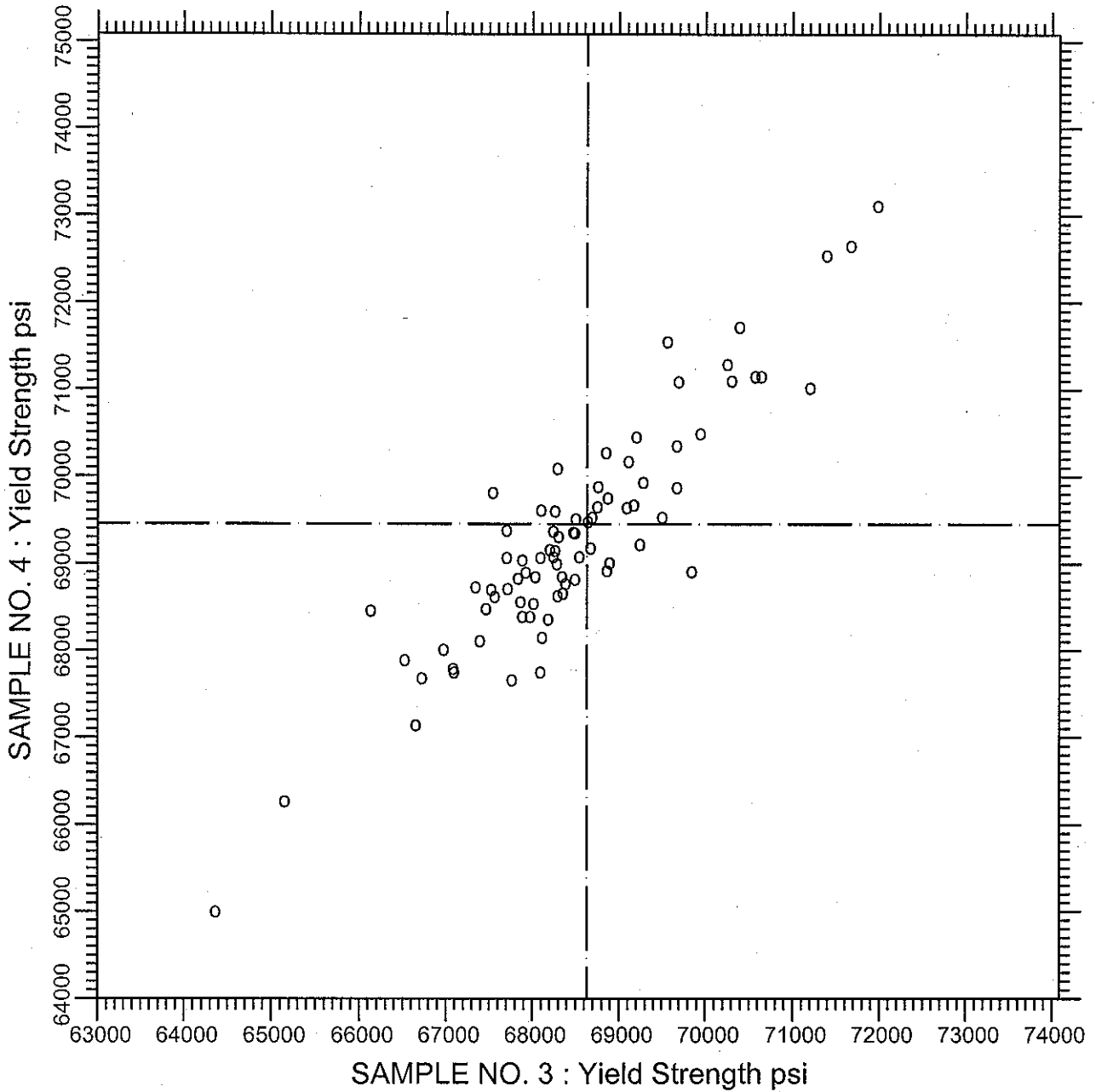
SAMPLE NO. 3 AVE 96088.8 S.D. 1287.8 C.V. 1.34

SAMPLE NO. 4 AVE 96032.4 S.D. 1304.2 C.V. 1.36

LABS ELIMINATED 51 52 920 1991 1154 1226 1591 2420

LABS OFF DIAGRAM 823

CCRL PROFICIENCY SAMPLE PROGRAM
Yield Strength
REINFORCING BAR SAMPLES NO. 3 & NO. 4



TEST NO.1060

Yield Strength

81 POINTS

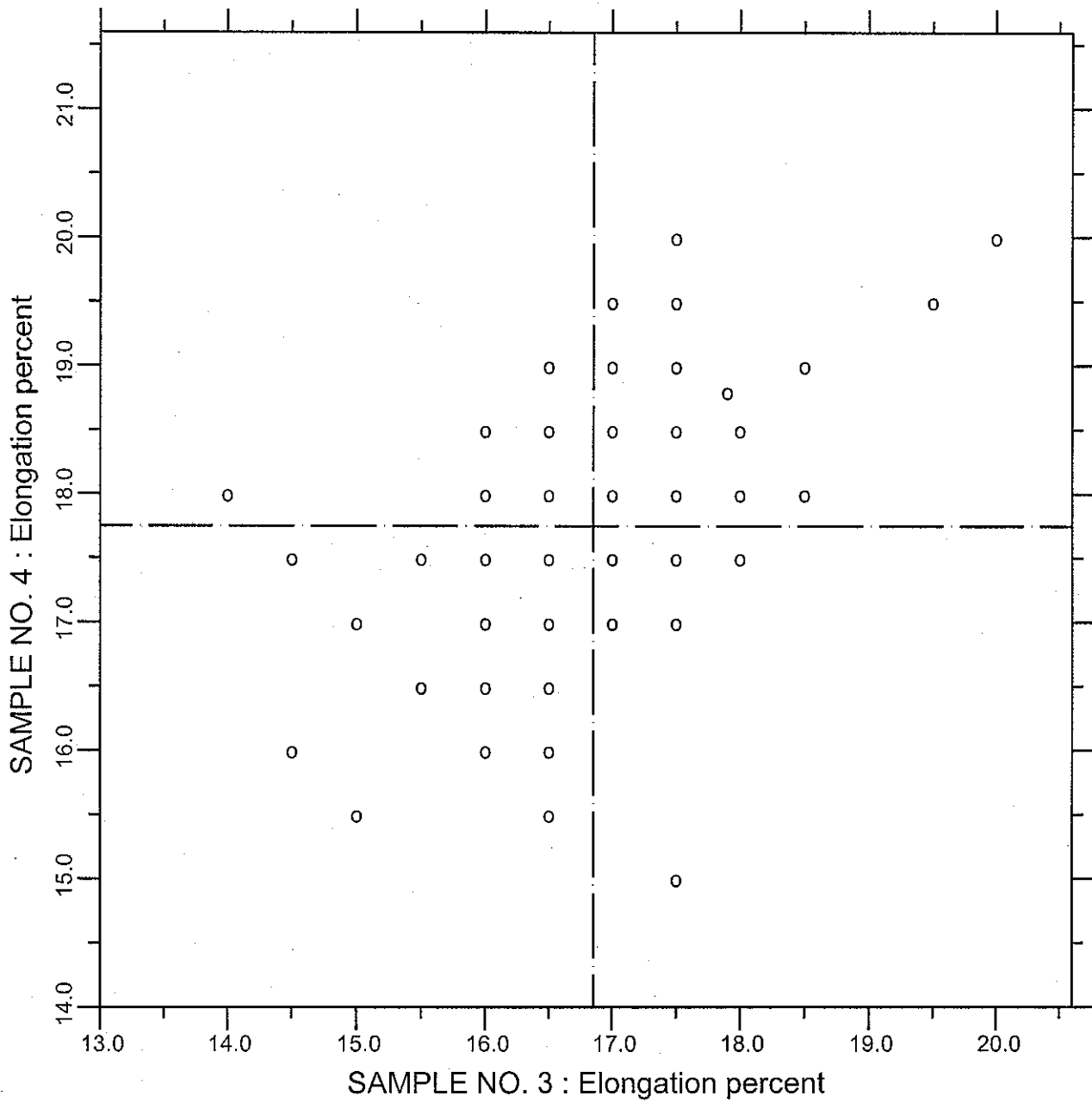
SAMPLE NO. 3 AVE 68631.9 S.D. 1591.7 C.V. 2.32

SAMPLE NO. 4 AVE 69451.9 S.D. 1549.7 C.V. 2.23

LABS ELIMINATED 51 52 920 823 1991 2420

LABS OFF DIAGRAM 1226 1591

CCRL PROFICIENCY SAMPLE PROGRAM
Elongation
REINFORCING BAR SAMPLES NO. 3 & NO. 4



TEST NO.1070

Elongation

86 POINTS

SAMPLE NO. 3 AVE 16.85 S.D. 1.04 C.V. 6.20

SAMPLE NO. 4 AVE 17.75 S.D. 0.98 C.V. 5.53

LABS ELIMINATED 52 22 1154 1189